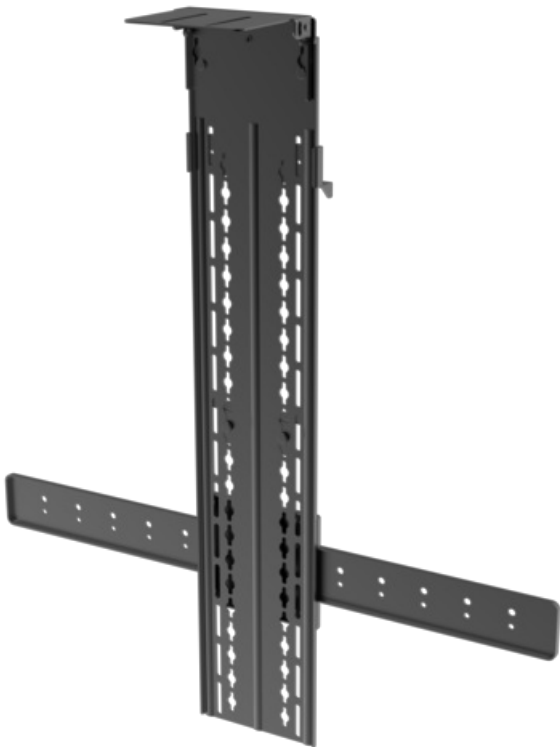


VCS-TV Mount2

Introduction

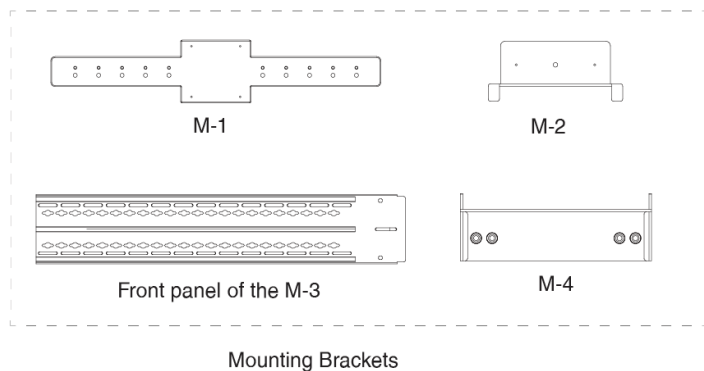
You can use the VCS-TV Mount2 to deploy devices on the top of TV.



Specification

Parameter	Description
Physical Feature	Dimension (W* D* H): 704*802*148 mm Carton Meas: 829*108*182mm N.W/CTN: 3.29kg G.W/CTN: 3.49kg

Package Contents



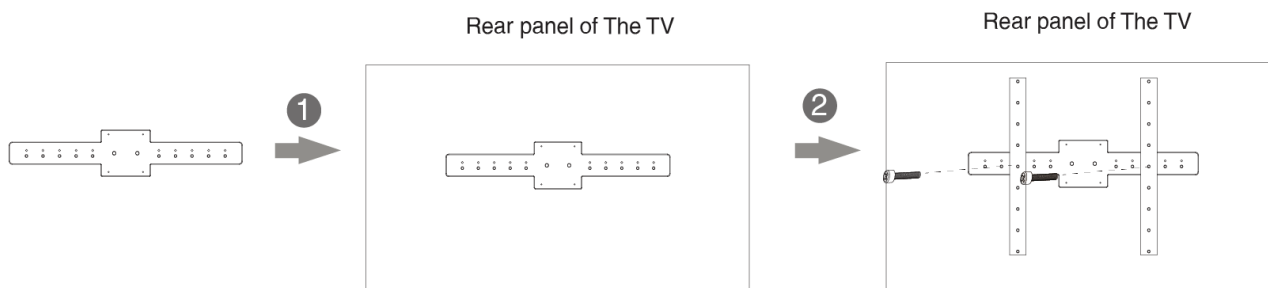
Assembling the TV Mount2

NOTE

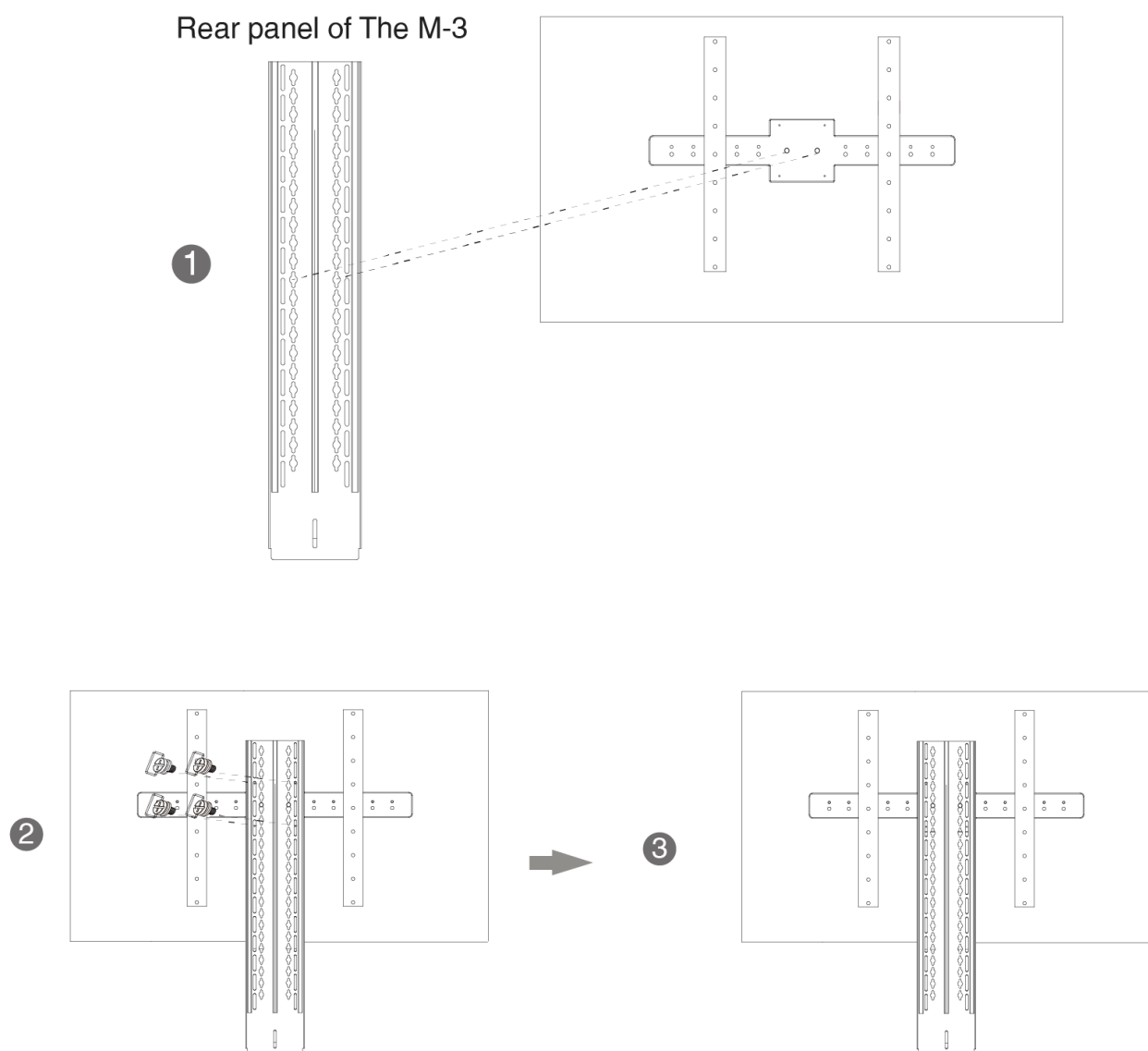
1. Assemble the M-3 upside down if you need to install the endpoint/camera above the TV.
2. We recommend that you install the endpoint/camera at a height from 1~1.2 meters.

Method1

1. Assemble the M-1, as shown below:

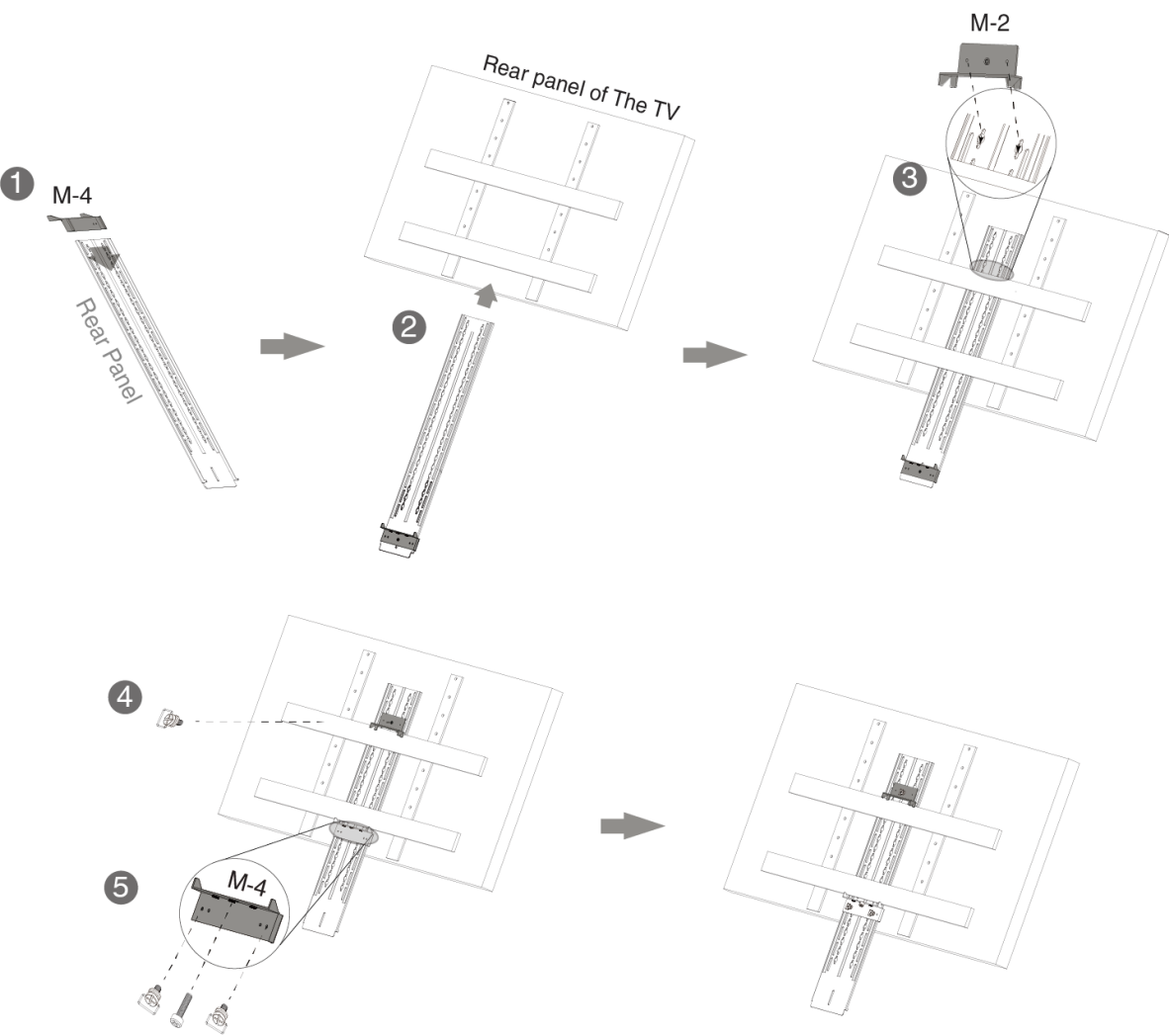


2. Assemble the M-3, as shown below:

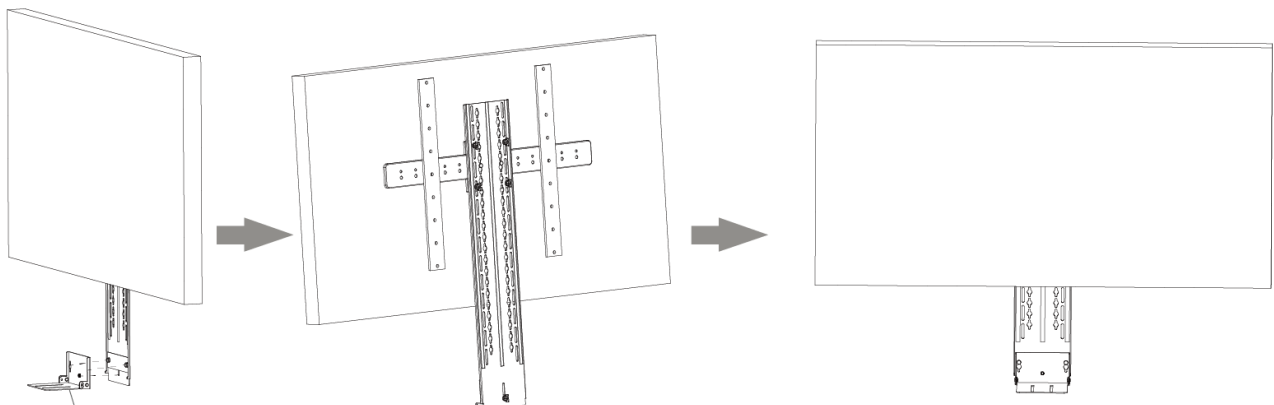


Method2

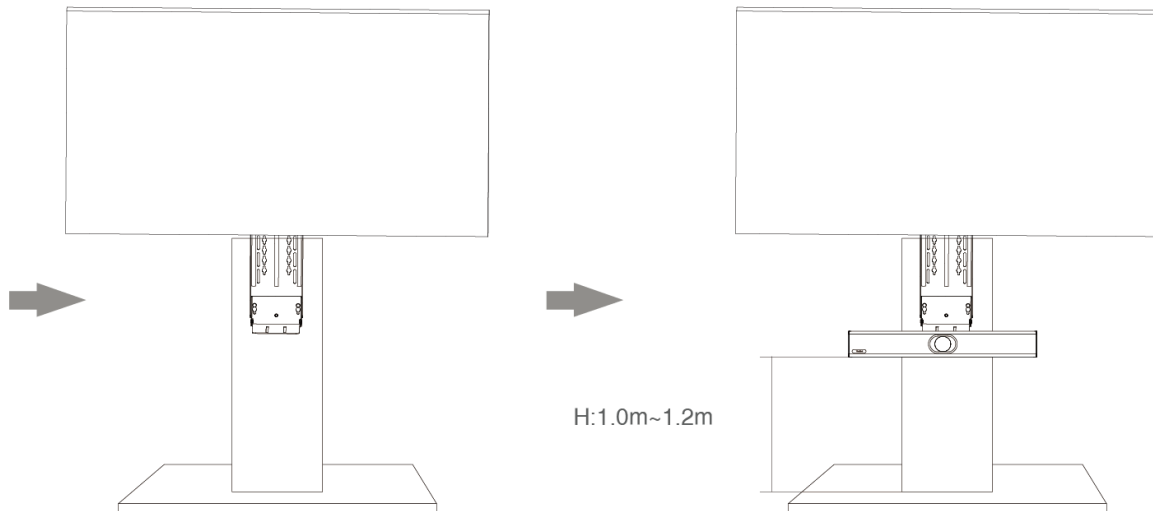
It is only applicable to TVs with mobile carts.



Installing the Endpoint/Camera



It is included in the package content of the endpoint/camera.



H:1.0m~1.2m

Device Compatibility

Mounts Compatibility Lists please refer to [Mounts Compatibility Lists](#).