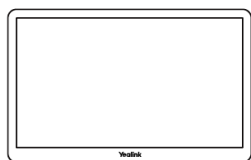
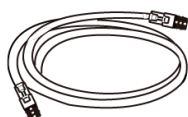


MTouch Plus Installation

Package Contents



MTouch Plus



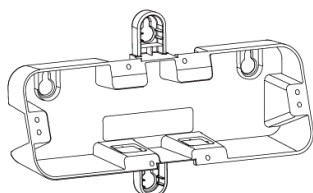
(7.5m, 24.6ft)

CAT5e UTP (RJ45 - RJ45) Cable



(1.2m, 3.94ft)

USB 3.1 (C - C, HDMI) Cable



(207.44 mm * 126.99 mm)

Mounting Bracket



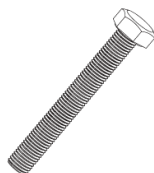
× 4

φ6 * 30 mm, white, Polyamide



× 4

4*30 FAHOZN3+ (+)



× 2

M8*60mm, SUS304



(M8, φ30*T2mm, (M8, SUS304)
SUS304)

Washer



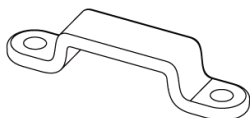
× 2



× 2

(M8, SUS304)

Wing Nuts



Lock cable buckle



× 4

2.5*8.0PAHOZN3+(+)



× 4

2.5*9.0FMHZN(+)



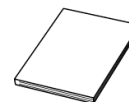
(L200*W62.5*T1.2mm)

Double-Coating Tape



(WH-85*3.0mm)

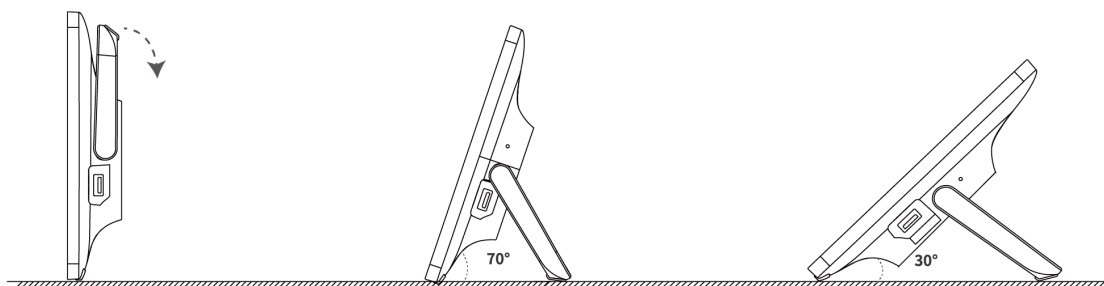
Screwdriver



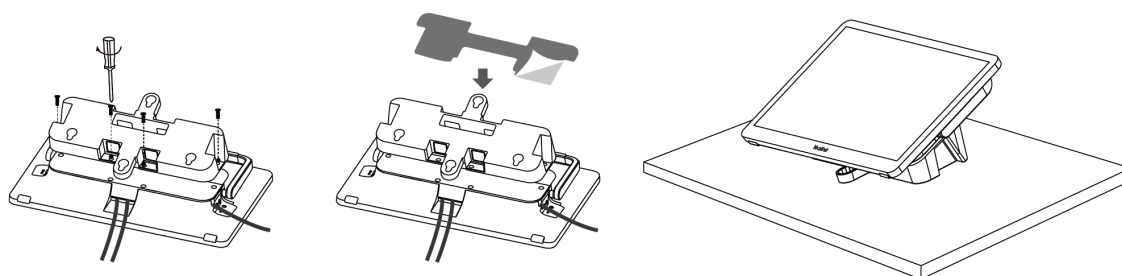
Quick Start Guide

Installation

Put on a table

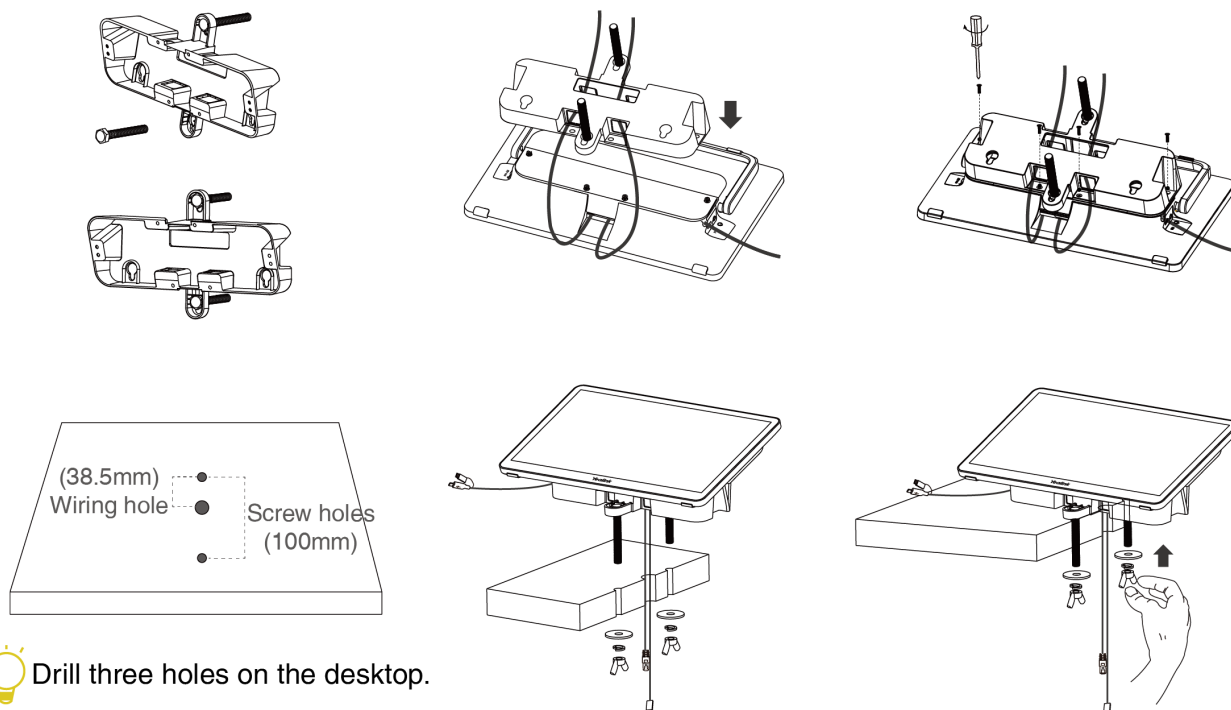


Stick on a table



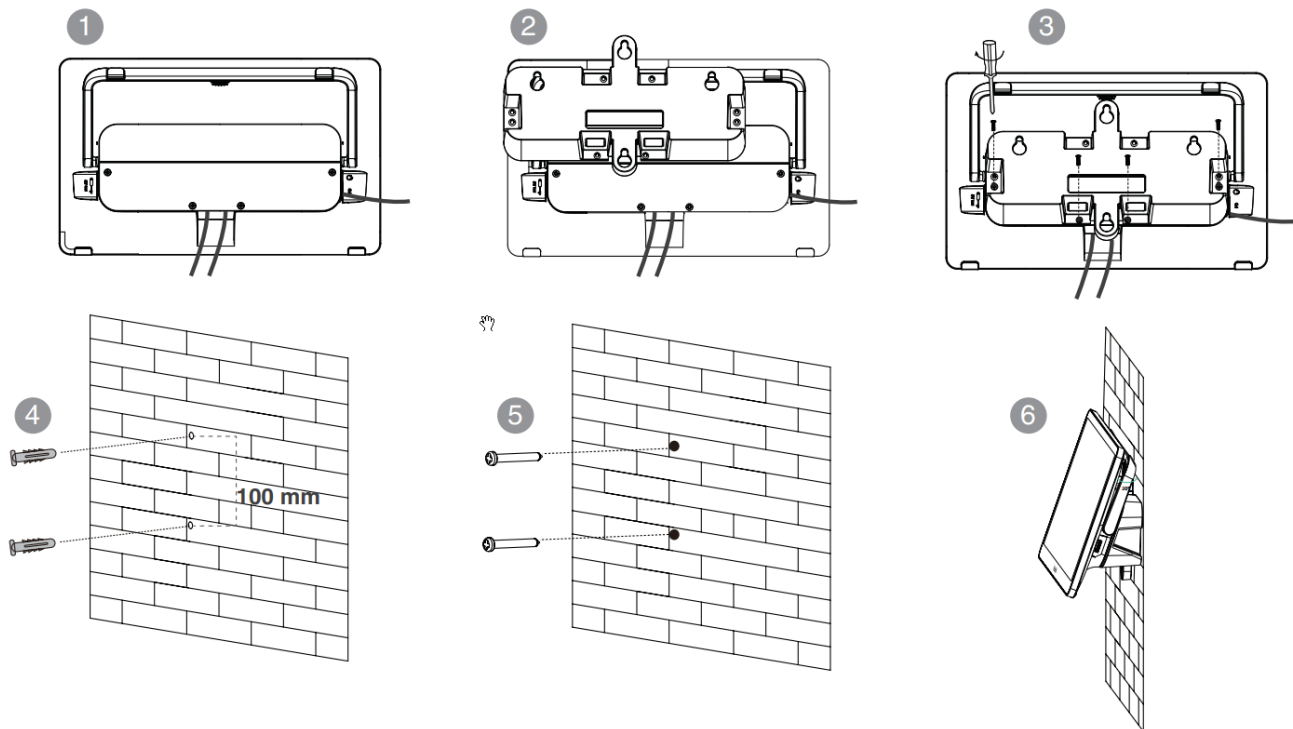
Please select the outlet hole according to your need.

Fix on a table



Drill three holes on the desktop.

Wall installation

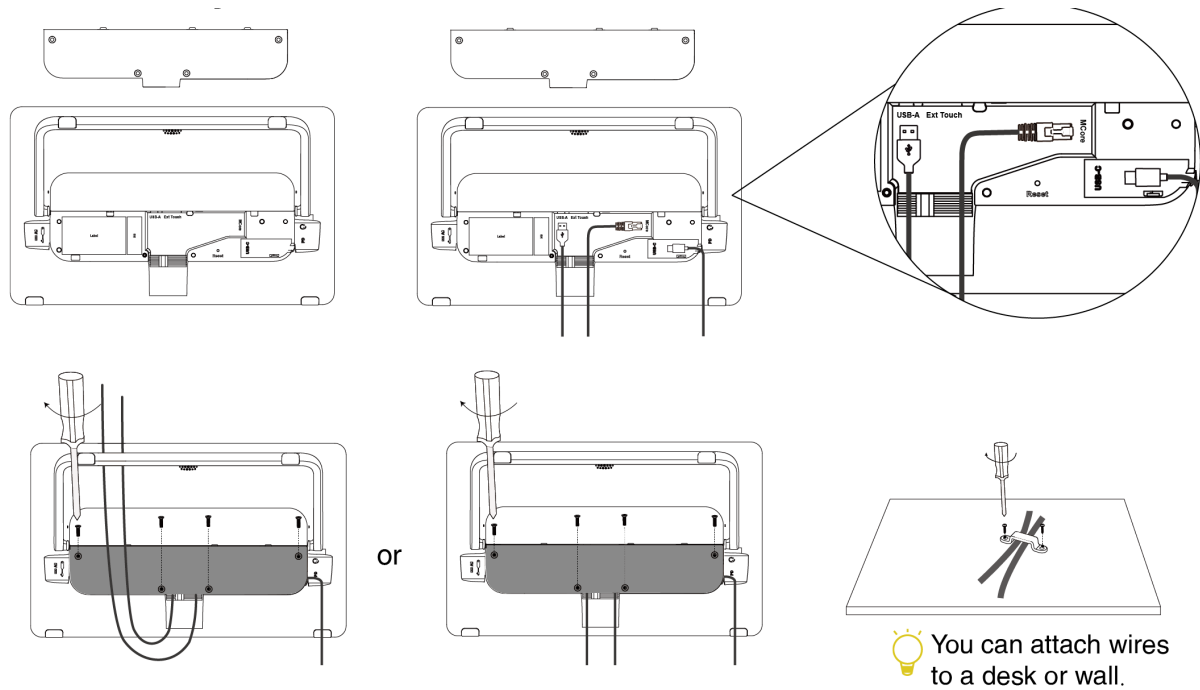


NOTE

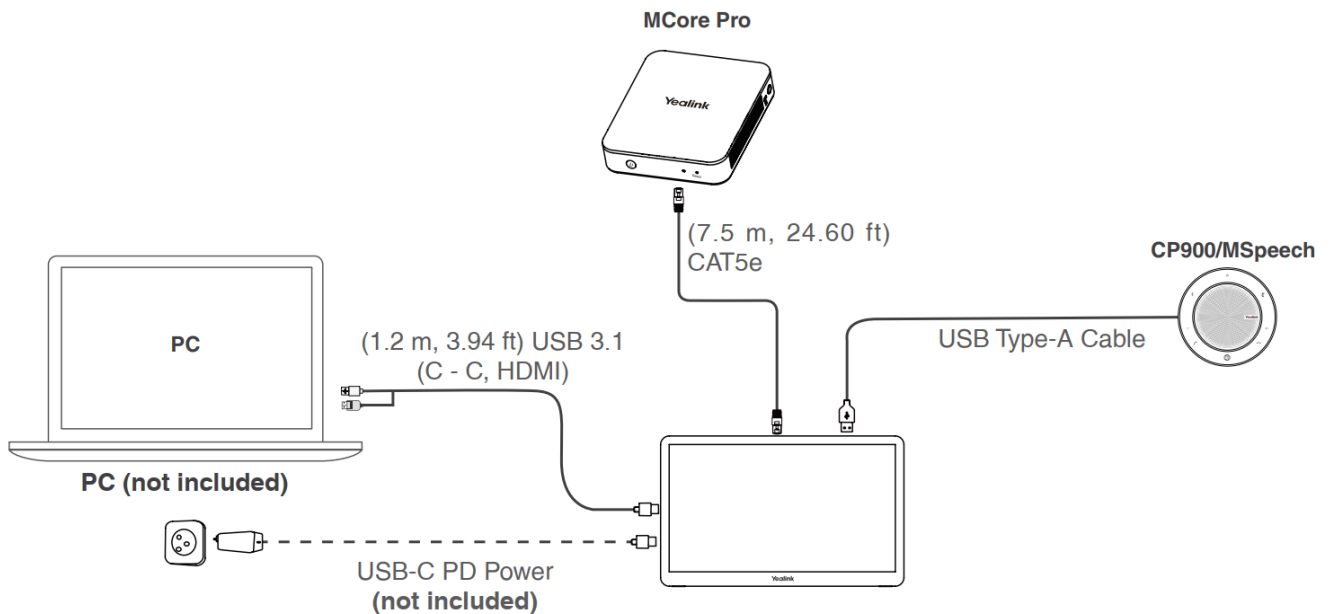
- We recommend that the height of the wall installation is 1m~1.5m from the ground.
- Please select the outlet hole according to your needs. You can wire through the wall if the conference room environment allows.

Connection

Assemble your MTouch Plus



Connect your MTouch Plus



NOTE

- You can purchase an additional PD power supply to power the PC.
- Not included accessories requirements:
 - PC: Equipped with HDMI or USB-C (support DP protocol) Port.
 - USB-C PD Power: A PD power adapter with a power transmission greater than 45W, equipped with a USB-C cable.

Hardware Interface

Please refer to [MVC Hardware Overview - MTouch Plus](#) for details.