

# UVC34 Installation

## Package Contents

**TIP**

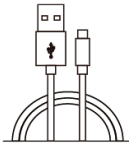
For the UVC34 unboxing video, please refer to [UVC34](#).  
We recommend that you use the accessories provided or approved by Yealink. The use of unapproved third-party accessories may result in poor performance.



UVC34

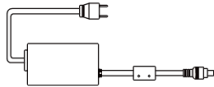


VCR20 Remote Control



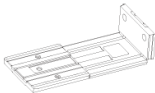
(7m, 22.97ft)

USB 2.0 (A - B) Cable



(3.5m, 11.48ft)

Power Adapter (48V/0.7A)



Mounting Bracket



× 2

Φ6 \* 30 mm, white, Polyamide



× 2

T4\*30mm FAHOZN3+ (+)



1/4inch\*12mm



(L70\*W50mm)  
Velcro



× 5

(20 \* 200 mm)  
Cable Ties



Quick Start Guide

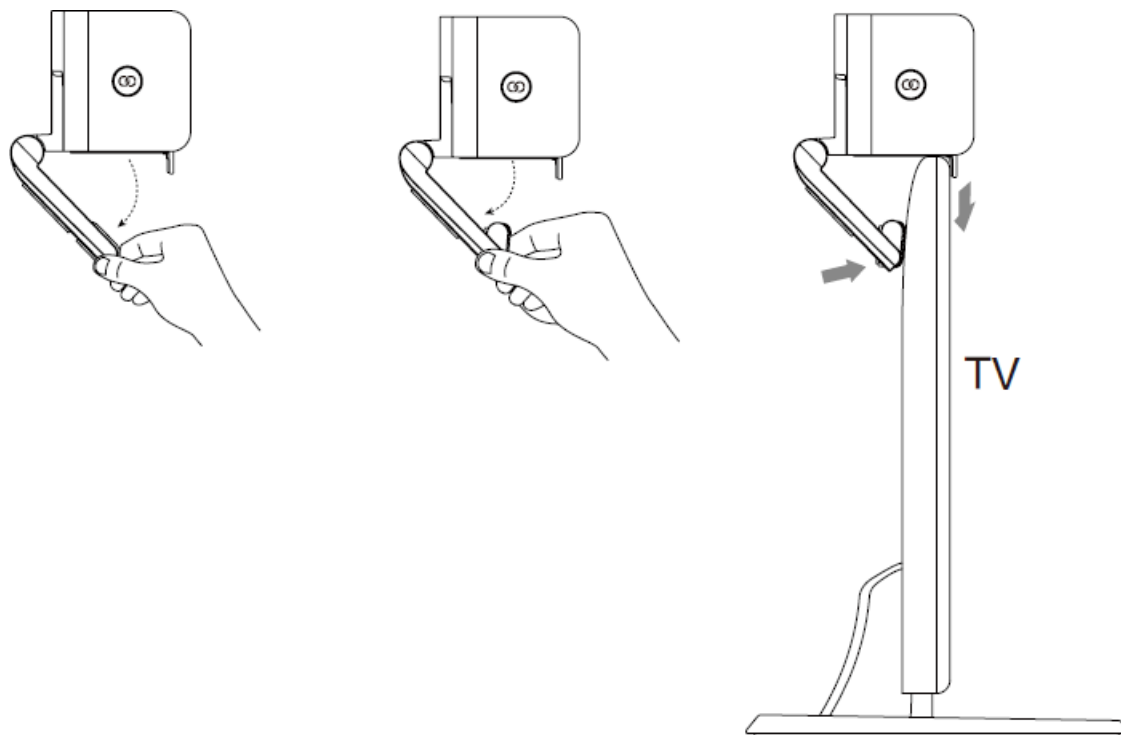
## Install UVC34

- **Put on a Flat Surface**

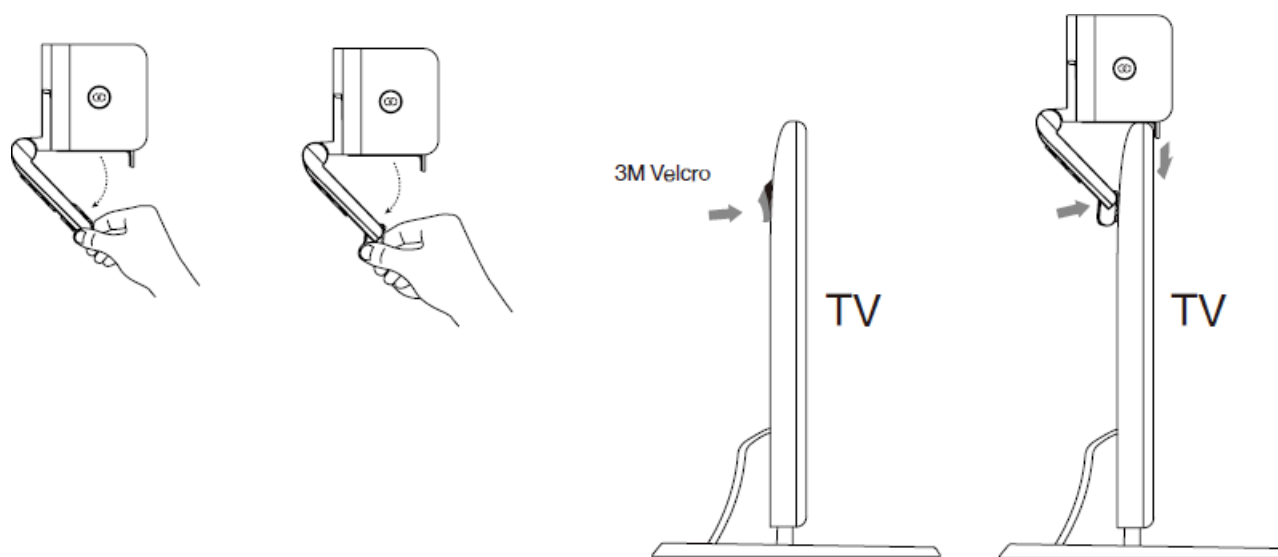
You can put the UVC34 on the conference table.

- **Mount on Top of a Display**

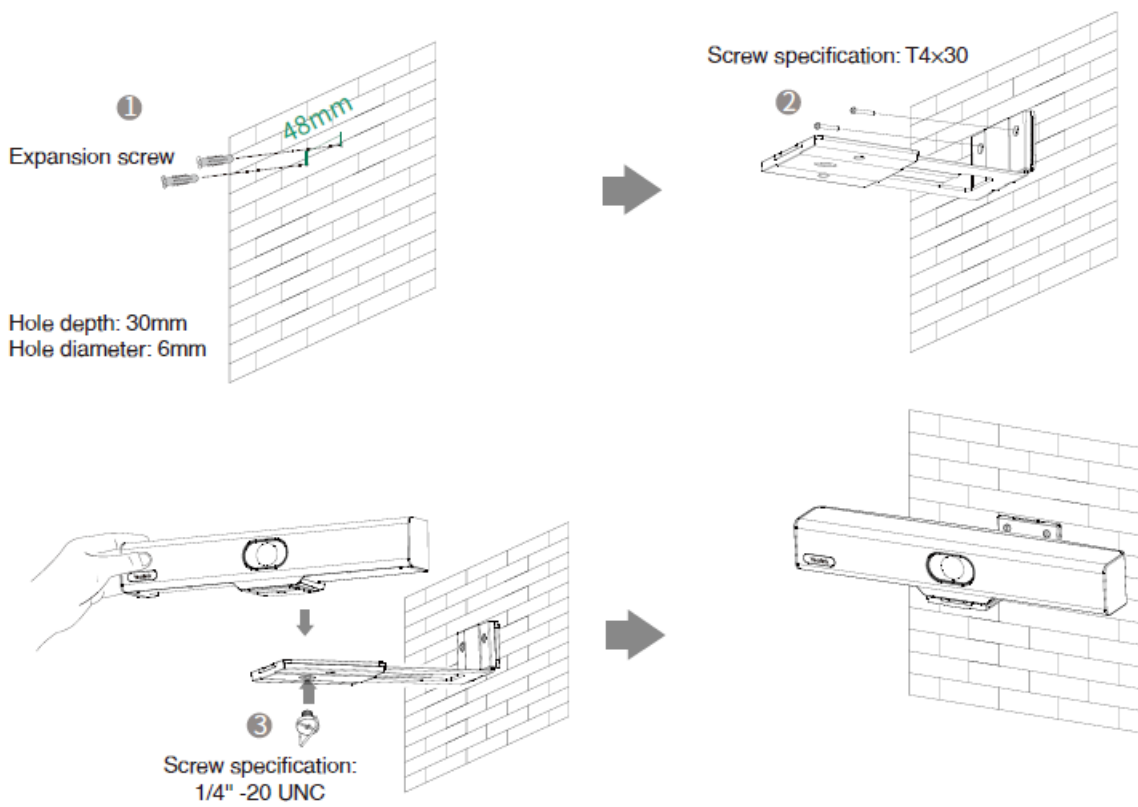
Choose the following installation method when the thickness of the TV is between 5 mm and 60 mm.



You can use 3M Velcro behind the display to ensure the stability of UVC34.

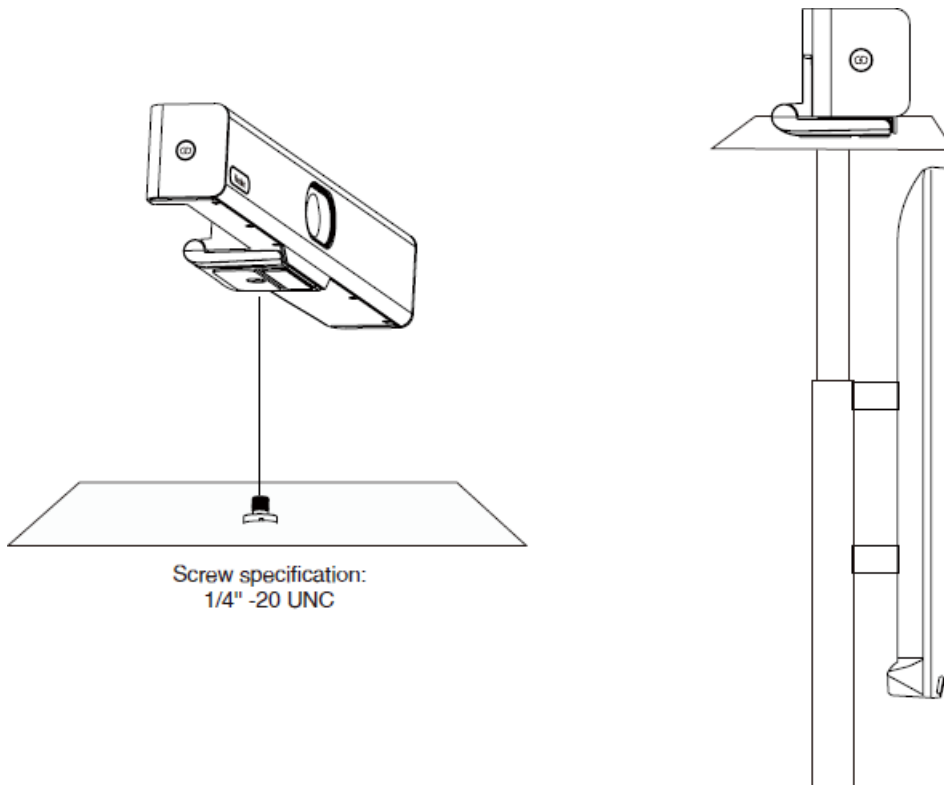


- Mount on the Wall



- **Mount onto a TV Stand or a Tripod**

You need to purchase a TV stand or a tripod separately. The TV stand or a tripod should be able to bear the weight of at least 5kg.



## Hardware Interface

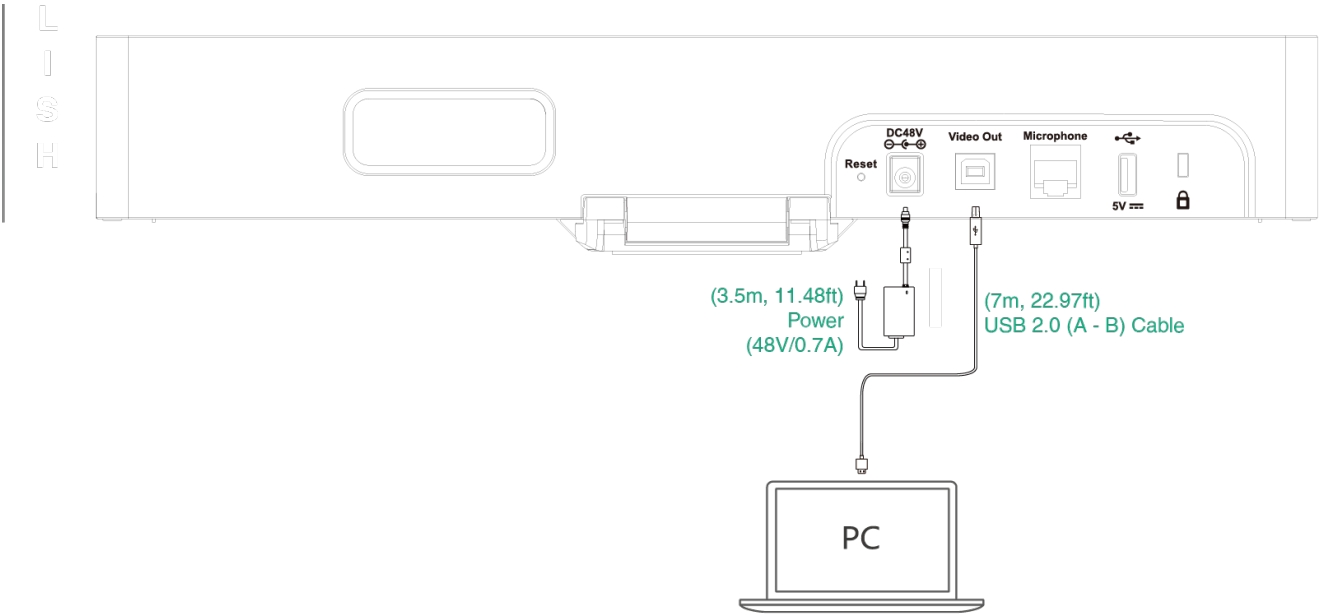
### UVC34

Please refer to [MVC Hardware Overview - UVC34 Camera](#) for details.

### VCR20 Remote Control

Please refer to [VCR20 Remote Control](#) for details.

## Connect UVC34



Ensure that UVC34 is the default device of your video conference software after connecting successfully, and you can enjoy its audio and video in the meeting.

LED Indicator

LED indicators on the UVC34:

LED Status	Description
Off	The UVC34 is powered off.
Solid green	The UVC34 is active.
Flash green	There is an incoming call.
Solid red	The UVC34 is muted.
Flash red	The UVC34 is in recovery mode, and the firmware has not been upgraded.
Solid orange	The UVC34 is initializing or in sleep mode.
Flash orange	The UVC34 is upgrading firmware.