



## UVC-G3-FLEX Quick Start Guide

## Package Contents



Camera



Flush Mount



Pole/Wall Mount



Outdoor Cover



Security Screw (Qty. 1)



Screws (Qty. 3)



Screw Anchors (Qty. 3)



Zip Ties (Qty. 2)

## Installation Requirements

- Phillips screwdriver
- Drill and 6 mm (1/4") bit for drywall anchors and 3 mm (1/8") for screws
- Category 5e (or above) Ethernet cable

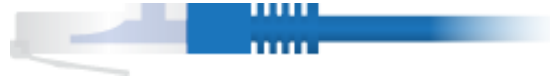


## UVC-G3-FLEX Quick Start Guide

boot on the connector. This will prevent unnecessary tension on the cable ends during installation.



*Cable without a strain-relief boot*



*Cable with a strain-relief boot*

## Outdoor Installation Requirements



**IMPORTANT:** When installed outdoors, the camera must be installed in the upright position only.

- Mounting location should be at least 60 cm (2 ft) from the edge of the eave or ceiling.
- Mount the camera in the upright position only. Please see diagram below.
- Shielded Category 5e (or above) cabling with drain wire should be used for all outdoor wired Ethernet connections and should be grounded through the AC ground of the PoE. We recommend that you protect your networks from harmful outdoor environments and destructive ESD events with industrial-grade, shielded Ethernet cable from Ubiquiti. For more details, visit [ui.com/toughcable](https://ui.com/toughcable)
- Surge protection should be used for all outdoor installations. We recommend that you use two Ethernet Surge Protectors, model ETH-SP-G2, one near the UVC-G3-Flex and the other at the entry point to the building. The ETH-SP-G2 will absorb power surges and safely discharge them into the ground.



### UVC-G3-FLEX Quick Start Guide

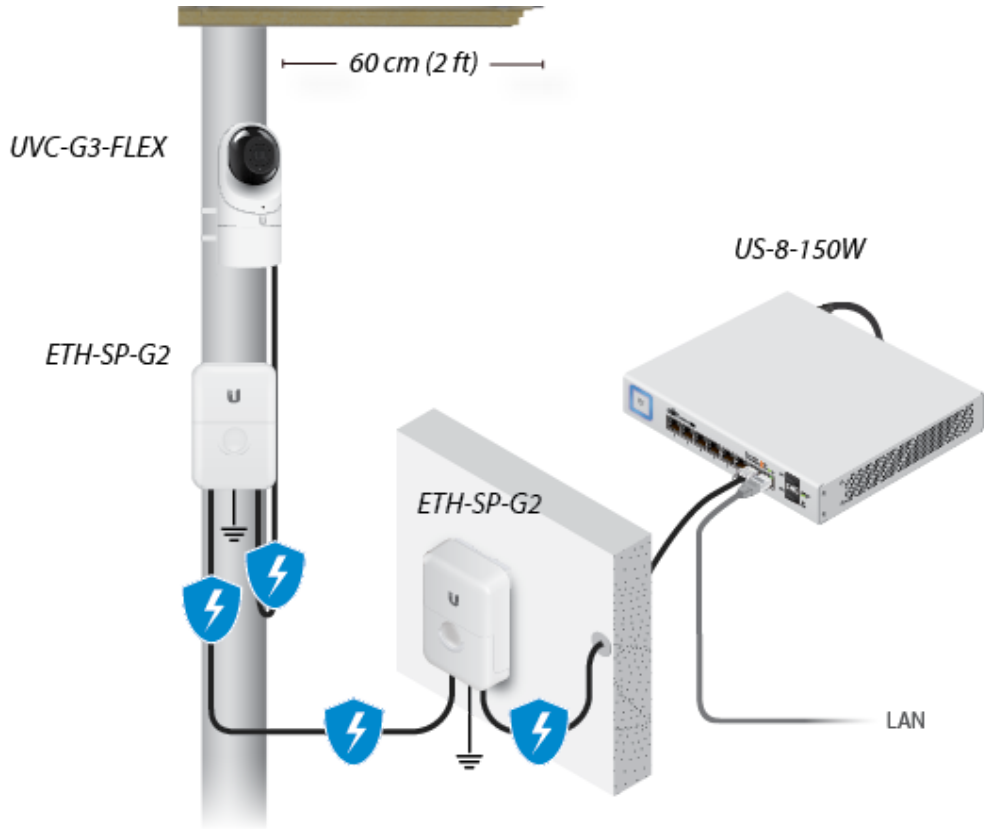
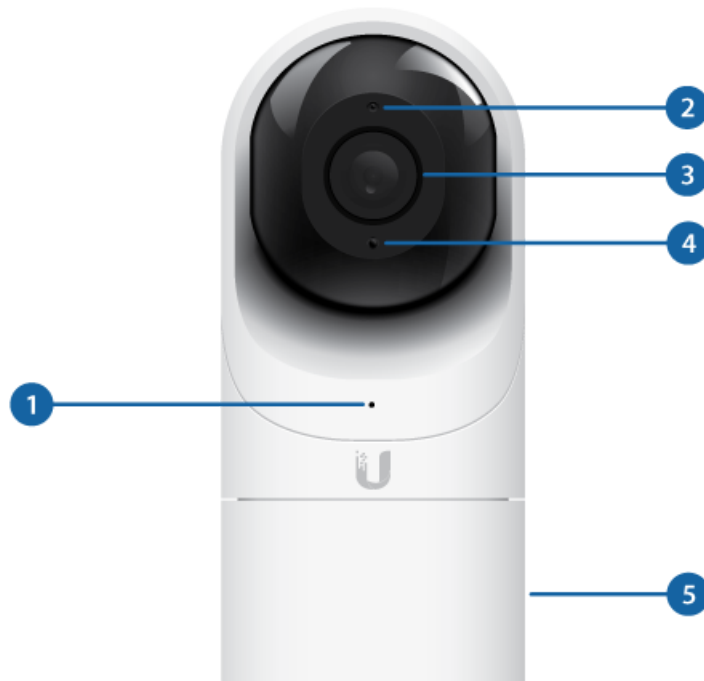


Diagram Showing Use of Ethernet Surge Protectors

## Hardware Overview



1 LED



### UVC-G3-FLEX Quick Start Guide

Alternating white/blue	Indicates that a process such as a firmware upgrade is taking place.
Steady Blue	Connected to UniFi Protect Controller; Reset Button Pressed
Flashing Green	Disconnected from Controller
Steady White	Awaiting adoption

#### 2 Microphone

Microphone for recording audio

#### 3 Camera Lens

Lens for viewing/recording video

#### 4 Light Sensor

Sensor for ambient light detection

#### 5 Swivel Base

Allows you to change the viewing angle of the camera by adjusting left or right. Useful if mounted on a wall or other permanent surface.

## Bottom View



#### 1 Ethernet Port



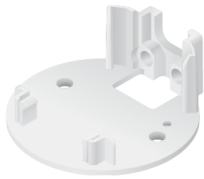
## UVC-G3-FLEX Quick Start Guide

compliant switch to the camera. The switch should be connected to a LAN running DHCP services and the UniFi Protect Controller software.

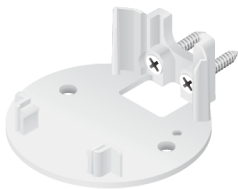
### 2 Reset Button

The Reset Button is used to reset the camera to factory defaults. Press and hold the Reset Button for more than 10 seconds while the camera is powered on.

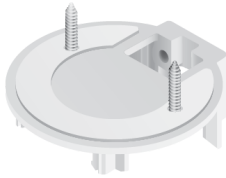
## Mounting Options



Use the Flush Mount by itself to install the G3 Flex camera on a desktop or tabletop. Out of the box, this mount comes preinstalled on the camera.



Use the Flush Mount with two screws to install the G3 Flex camera on a wall (vertically).



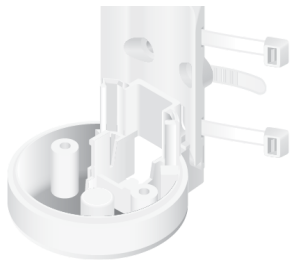
Use the Flush Mount with two screws to install the G3 Flex camera on a solid horizontal surface or ceiling.



Use the Pole Mount with two screws and the Outdoor Cover to install the G3 Flex camera on a wall or flat surface outdoors. The Outdoor Cover is not required for indoor installations.



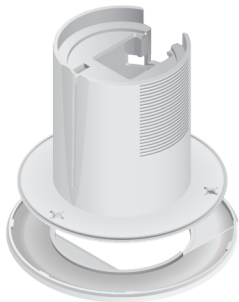
## UVC-G3-FLEX Quick Start Guide



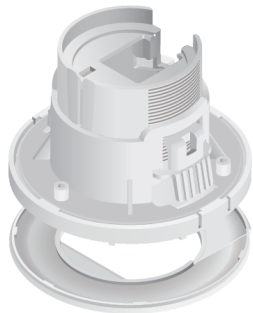
Use the Pole Mount with two plastic zip ties and the Outdoor Cover to install the G3 Flex camera on an outdoor pole. The Outdoor Cover is not required for indoor pole installations.

## Additional Mounts Available

There are two additional mounts available for the G3 Flex: a Ceiling Mount and a Pendant Mount. Each is sold separately.



Use the optional Ceiling Mount, Screw Kit, and Mount Cover to install the G3 Flex camera on a solid horizontal surface or ceiling.



Use the optional Ceiling Mount, Mount Cover, and Back Plate Assembly to install the G3 Flex camera on a drop tile ceiling or horizontal surface where the interior side of the Ceiling Mount is accessible.



Use the Pendant Mount to install the G3 Flex camera onto a fitted 3/4" or 1.5" conduit mount or ceiling pipe.

## Installation

The UVC G3 Flex can be installed using one of the following methods:



## UVC-G3-FLEX Quick Start Guide

- **Wall/Ceiling** For installing in a secure location; used more for stationary or permanent installations.
- **Pole** For installing on a pole (indoor or outdoor).

Proceed to the appropriate section for your installation.



**Note:** The viewing angle or surveillance coverage of the G3 Flex camera can be changed at any time.

- Tilt the lens up or down for vertical adjustment
- Turn the base left or right for horizontal adjustment



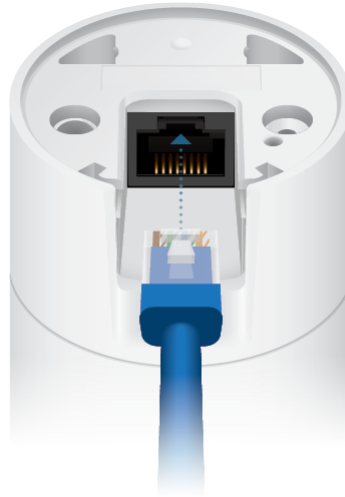
## Desktop

1. Remove the Flush Mount from the bottom of the camera.

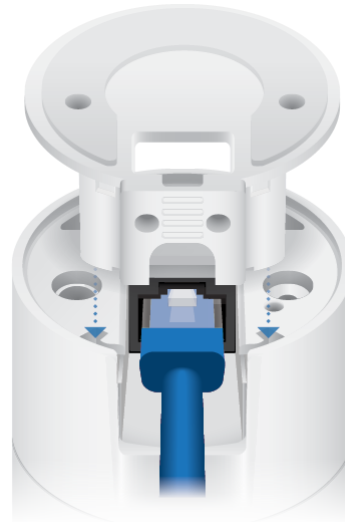




## UVC-G3-FLEX Quick Start Guide



3. Attach the camera to the Flush Mount by lining up the notches with the slots in the base of the camera. Press firmly together until the camera is secure.



**Note:** Ensure the Ethernet cable is seated in the notch between the Flush Mount and base of the camera.

4. Place the camera on a desk or table in its upright position.
5. Adjust the viewing angle or surveillance coverage as needed by following these steps:
  - Tilt the lens up or down to adjust the angle vertically
  - Turn the camera body left or right to adjust the angle horizontally





## UVC-G3-FLEX Quick Start Guide



Installation complete.



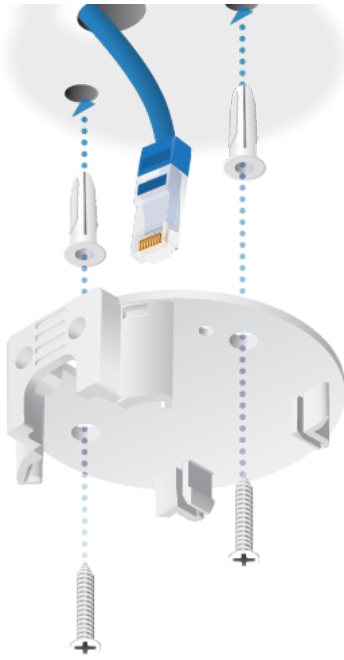
*Desktop / Table Install*

## Wall/Ceiling

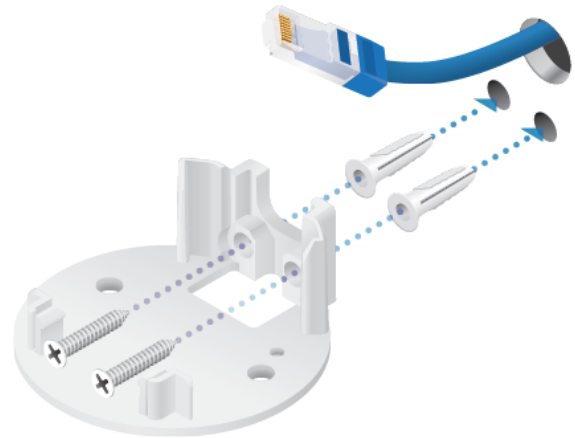
1. If the Ethernet cable is coming from the inside of a wall:
  - a. Drill or cut a hole in the wall and feed the Ethernet cable through the opening.
  - b. Pull the Ethernet cable forward and slide it through the opening in the mount.
2. Use the Screws and Screw Anchors to secure the Flush Mount to the wall.



## UVC-G3-FLEX Quick Start Guide

*Top Side Down Mounting*

or

*Vertical Upright Mounting*

3. Connect the Ethernet cable to the Ethernet Port in the base of the camera.



4. Attach the camera to the Flush Mount by lining up the notches with the slots in the base of the camera. Press firmly together until the camera is secure.



# UVC-G3-FLEX Quick Start Guide



*Vertical mounting on ceiling*

or



*Vertical mounting on a wall*

Installation complete.



*Horozntal Surface / Ceiling with Flush Mount*



## UVC-G3-FLEX Quick Start Guide

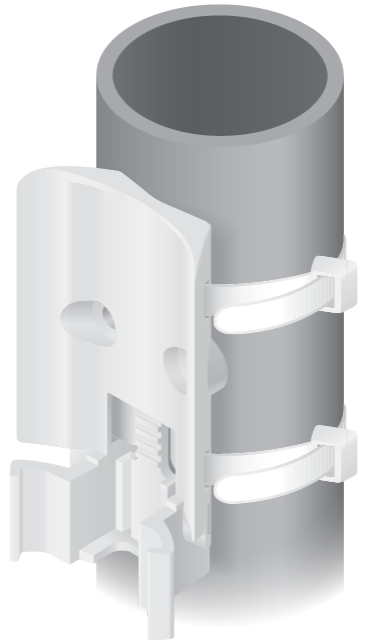
*Indoor Wall with Flush Mount*

## Pole



**Note:** If you are mounting the camera outdoors, it must be installed in the upright position to prevent water from getting into the base of the camera. Use the Outdoor Cover for additional protection from moisture.

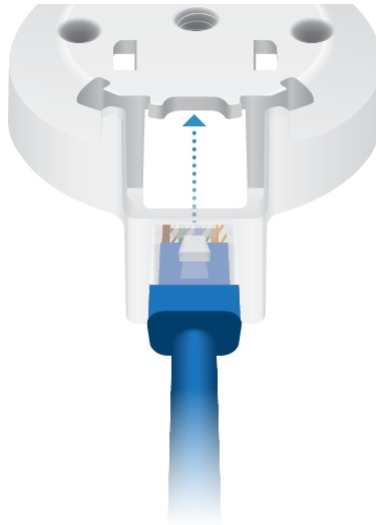
1. Attach the Pole Mount to a pole using the included Zip Ties.



2. Insert and pull an Ethernet cable through the back port opening of the Outdoor Cover.

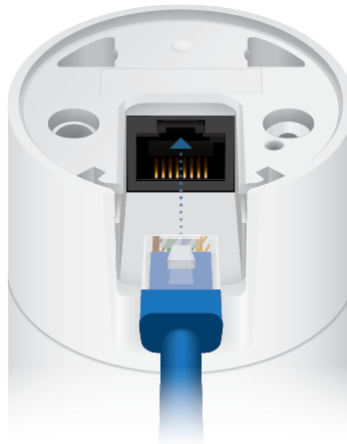


## UVC-G3-FLEX Quick Start Guide



**Note:** When using the Outdoor Cover, use an Ethernet cable without strain-relief boots on the connector. This will prevent unnecessary tension on the cable ends.

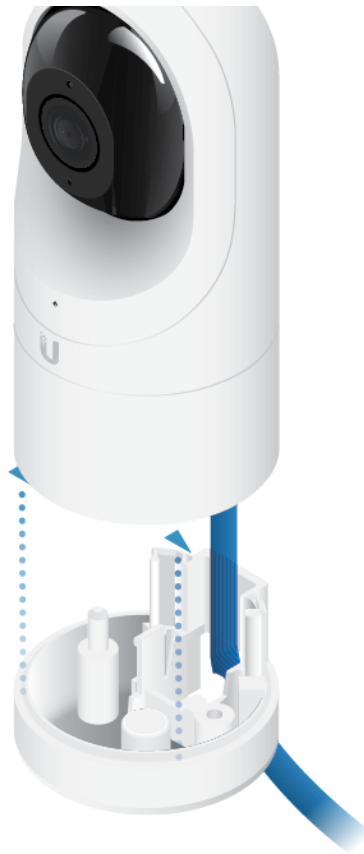
3. Connect the Ethernet cable to the Ethernet Port on the G3 Flex camera.



4. Attach the camera to the Outdoor Cover by lining up the notches with the slots on the bottom of the camera. Press firmly until the camera snaps on.



## UVC-G3-FLEX Quick Start Guide



## 5. Attach the camera to the Pole Mount:

- a. Press the camera against the Pole Mount and line up the notches on the mount with the slots on the bottom of the camera.
- b. Slide the camera down onto the Pole Mount until it is secure.





## UVC-G3-FLEX Quick Start Guide

 boots on the connector. This will prevent unnecessary tension on the cable ends.

6. Use a phillips screwdriver to install the Security Screw through the Outdoor Cover and into the base of the camera. This helps secure the camera to the mount.



7. Adjust the camera to the desired viewing angle by:
  - Tilting the lens up or down for vertical adjustment
  - Turn the camera body left or right to adjust the angle horizontally



Installation is complete.



## UVC-G3-FLEX Quick Start Guide



*Pole Mount Install*

### Setting Up UniFi Protect via App

Download and install the UniFi Protect Mobile App to configure the UVC-G3-Flex.



**Note:** When you first launch UniFi Protect, the app will prompt you to enable Bluetooth and other relevant features necessary to provide the best user experience possible. Please allow these features and permissions to take place for proper app functionality.

### Specifications

UVC-G3-FLEX	
Dimensions	Ø 107.5 x 48 x 48 mm (Ø 4.23 x 1.89 x 1.89")
Weight	170 g (5.99 oz)
Sensor	1/2.7" 2-Megapixel HDR Sensor
Lens	EFL 4mm / f2.0





## UVC-G3-FLEX Quick Start Guide

viewing Angle with Lens Distortion Correction (LDC)	
LDC Off	87.4° (H), 47° (V), 104° (D)
LDC On	80° (H), 46° (V), 92° (D)
Night Mode	IR LEDs with Mechanical ICR Filter
Video Compression	H.264
Resolution	1080p FHD (1920 x 1080)
Maximum Frame Rate	25 FPS
Image Settings	Brightness, Contrast, Sharpness, Saturation, Noise Reduction, 50/60 Hz
Microphone	Yes
Management Interface	UniFi Protect
Networking Interface	(1) 10/100 Ethernet Port
Max. Power Consumption	4W
Power Method	802.3af PoE
Power Supply	802.3af PoE Switch Port
Mounting	Table, Wall (Indoor/Outdoor), Pole
Operating Temperature	-20 to 50° C (-4 to 122° F)
Operating Humidity	20 to 90% Noncondensing

## Safety Notices

1. Read, follow, and keep these instructions.
2. Heed all warnings.
3. Only use attachments/accessories specified by the manufacturer.



**WARNING:** Hot surface. Do not touch.



**WARNING:** Do not use this product in location that can be submerged by water.



**WARNING:** Avoid using this product during an electrical storm. There may be a remote risk of electric shock from lightning.



## UVC-G3-FLEX Quick Start Guide

1. Compliance is required with respect to voltage, frequency, and current requirements indicated on the manufacturer's label. Connection to a different power source than those specified may result in improper operation, damage to the equipment or pose a fire hazard if the limitations are not followed.
2. There are no operator serviceable parts inside this equipment. Service should be provided only by a qualified service technician.

## Limited Warranty

[ui.com/support/warranty](https://ui.com/support/warranty)

The limited warranty requires the use of arbitration to resolve disputes on an individual basis, and, where applicable, specify arbitration instead of jury trials or class actions.

## Compliance

### FCC

Changes or modifications not expressly approved by the party responsible for compliance could void the user's authority to operate the equipment.

This device complies with Part 15 of the FCC Rules. Operation is subject to the following two conditions.

1. This device may not cause harmful interference, and
2. This device must accept any interference received, including interference that may cause undesired operation.

This equipment has been tested and found to comply with the limits for a Class A digital device, pursuant to Part 15 of the FCC Rules. These limits are designed to provide reasonable protection against harmful interference when the equipment is operated in a commercial environment. This equipment generates, uses, and can radiate radio frequency energy and, if not installed and used in accordance with the instruction manual, may cause harmful interference to radio communications. Operations of this equipment in a residential area is likely to cause harmful interference in which case the user will be required to correct the interference at his own expense.

### ISED Canada

CAN ICES-3(A)/NMB-3(A)

### Australia and New Zealand



Warning: This equipment is compliant with Class A of CISPR 32. In a residential environment this equipment may cause radio interference.

### CE Marking

CE marking on this product represents the product is in compliance with all directives that are applicable to it.



## UVC-G3-FLEX Quick Start Guide



### [WEEE Compliance Statement](#)

### [Declaration of Conformity](#)

### Online Resources



© 2023 Ubiquiti Inc. All rights reserved.