



SIP Paging Adapter SIP-T20

Quick Start Guide



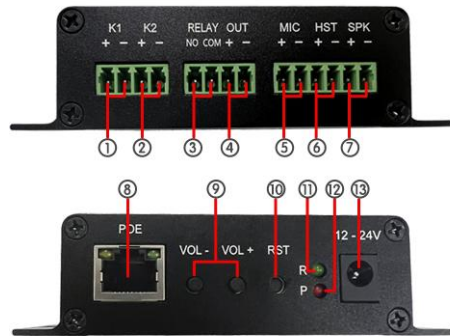
Features

- Two-way intercom communication.
- SIP & ONVIF protocol compatibility.
- PoE eliminates need for local power supply.
- 48K OPUS Audio Codec enables excellent sound quality.
- Support pre-recorded messages, schedule, HTTP, alarm in/out.

Specification

Model	SIP-T20
Protocol	SIP, ONVIF, HTTP, IPv4, DHCP, RTSP, RTP, RTCP, TCP, UDP, ARP, FTP, TFTP, NFS, NTP
Codec	OPUS 48 kHz, MP3 44.1 kHz, G.722 ADPCM 16 kHz, G.711 PCMU 8 kHz, G.711 PCMA 8 kHz
Network Interface	RJ45, 10BASE-T/100BASE-TX
Power	PoE or DC 12V/24V
Rated Power	15W
Interface	6 Pin Audio Interface: 1* MIC input, 1* Headset output, 1* Speaker output 4 Pin IO Interface: 2* IO Alarm input 4 Pin Alarm Out Interface: 1* Relay output, 1* IO output
Function	Compatible with VoIP devices and ONVIF VMS, support two way communication, pre-recorded messages, schedule play, GPIO in, HTTP control
Material	Metal
Color	Black
Weight	250g

Interface

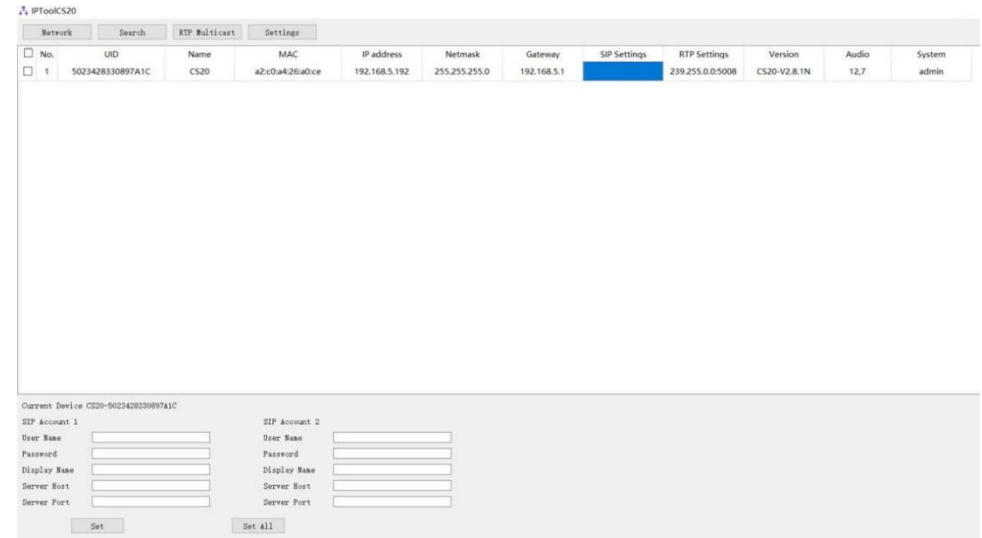


Lable	Description	Label	Description
①	IO Input Interface	②	IO Input Interface
③	Relay NO COM Interface	④	IO Output Interface
⑤	Microphone Interface	⑥	Headset Interface
⑦	Speaker Interface	⑧	PoE Interface
⑨	Volume Control Key	⑩	Reset Interface
⑪	Audio LED	⑫	Power LED
⑬	Power Input Interface		

Configuration

Option 1: IPTool Setting

- Enter www.tonmind.com to download IPTool for configuration.
(Download routine: Support>Download Center>Software).
- Scan Local area network devices.
- Start your setting.



Option 2: Web Setting

- Change the IP of computer to 192.168.5.X network segment.
- Open a browser and type in <http://192.168.5.200>
- Enter the user name and password in Login page.
Default user: admin password: tm1234
- Start your setting.

