

**Yealink**

Yealink MP56 E2 Smart  
Business Phone



# Yealink MP56 E2 Smart Business Phone User Guide

[Home](#) » [Yealink](#) » Yealink MP56 E2 Smart Business Phone User Guide 

## Contents

- [1 Yealink MP56 E2 Smart Business Phone](#)
- [2 Package Contents](#)
- [3 Assembling Your Phone](#)
- [4 Hardware Component Instructions](#)
- [5 Declaration of Conformity](#)
- [6 Warranty](#)
- [7 General Requirements](#)
- [8 Troubleshooting](#)
- [9 Documents / Resources](#)
  - [9.1 References](#)
- [10 Related Posts](#)

# Yealink

**Yealink MP56 E2 Smart Business Phone**



## Yealink Smart Business Phone MP56 E2 – Teams® Edition

### Package Contents

- MP56 E2 Phone
- Handset
- Handset Cord
- 2m Ethernet Cable
- Stand
- Quick Start Guide
- 1.2 m USB-C Cable
- Power Adapter (Optional)
- Wallmount Bracket (Optional)

**Note:** We recommend that you use the accessories provided or approved by Yealink. Unapproved third-party accessories may result in reduced performance.

### Assembling Your Phone

#### Attach the Stand

Attach the stand to the back of the phone as shown in the diagram.

#### Optional: Attach the Wall Mount Bracket

The reversible tab has a lip which allows the handset to stay on-hook when the IP phone is mounted vertically. For more information, refer to the Yealink Wall Mount Quick Installation Guide for Yealink IP Phones.

### Connect Cables

- Power Adapter (DC 5V/2A)
- PC Connection (Optional)
- Device Mode (coming soon)
- AC Power Option
- PoE (Power over Ethernet) Option

- IEEE 802.3af compliant PoE Hub/Switch

## Hardware Component Instructions

Item	Description
1	Reversible Tab
2	Speaker
3	Transfer Key
4	Hold Key
5	Redial Key
6	Volume Key
7	Power LED Indicator
8	Touch Screen
9	Keypad
10	Headset Key
11	Mute Key
12	Teams Key
13	Speakerphone Key
14	USB 2.0 Type-A port (DC 5 V/0.5 A)

## Regulatory Notices

### Operating Ambient Temperatures

Ensure the device is used within the specified temperature range.

### Warranty

Our product warranty is limited to the unit itself when used normally in accordance with the operating instructions and the system environment. We are not liable for damage or loss resulting from the use of this product, or for any claim from a third party.

### Restriction of Hazardous Substances Directive (RoHS)

This device complies with the requirements of the EU RoHS Directive. Statements of compliance can be obtained by contacting [support@yealink.com](mailto:support@yealink.com)

### Cleaning Requirements

Follow cleaning instructions to prevent electric shock or other hazards.

### Safety Instructions

Read these safety instructions before use to reduce the risk of fire, electrical shock, and other personal injury.

### Environmental Recycling

Never dispose of the device with domestic waste. Follow local recycling regulations.

## Troubleshooting

- **Power Issues:** Ensure the plug is clean and connected to a working outlet.
- **Temperature Range:** Use the device within the operating temperature range.
- **Cable Connection:** Ensure cables are connected correctly.
- **Dust in Ports:** Clean the ports if necessary.

## Contact Information

- YEALINK NETWORK TECHNOLOGY CO., LTD.
- No.666 Hu'an Rd, Huli District, Xiamen City, Fujian, P.R.C
- YEALINK (EUROPE) NETWORK TECHNOLOGY B.V.
- Sir Winston Churchillln 299 k, 2288DC Rijswijk
- YEALINK (USA) NETWORK TECHNOLOGY CO., LTD.
- 999 Peachtree Street Suite 2300, Fulton, Atlanta, GA, 30309, USA

Made in China

## FAQ

1. What should I do if my phone doesn't power on?

Check the power connection and ensure the outlet is working. Try using a different power adapter if available.

2. How do I mount the phone on the wall?

Use the wall mount bracket and follow the instructions provided in the guide.

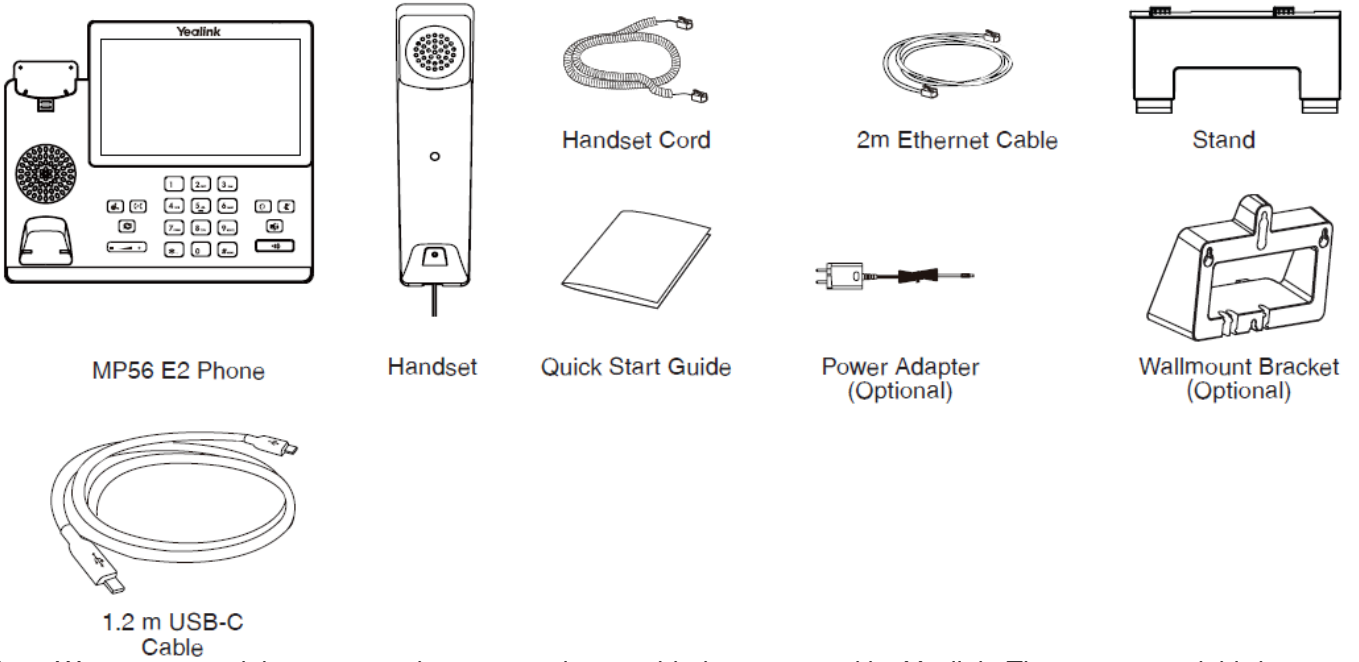
3. What is the USB port used for?

The USB 2.0 Type-A port can be used for connecting compatible devices.

4. Can I use third-party accessories?

It is recommended to use accessories provided or approved by Yealink to ensure optimal performance.

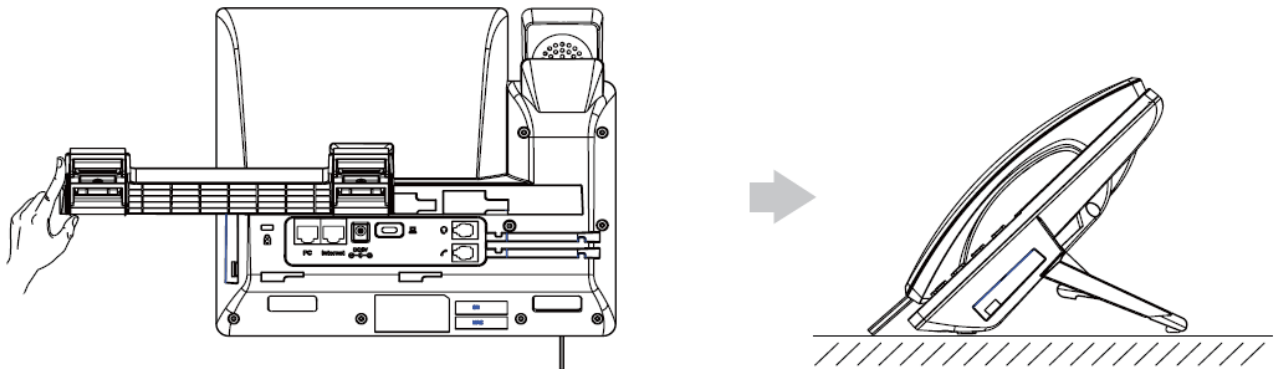
## Package Contents



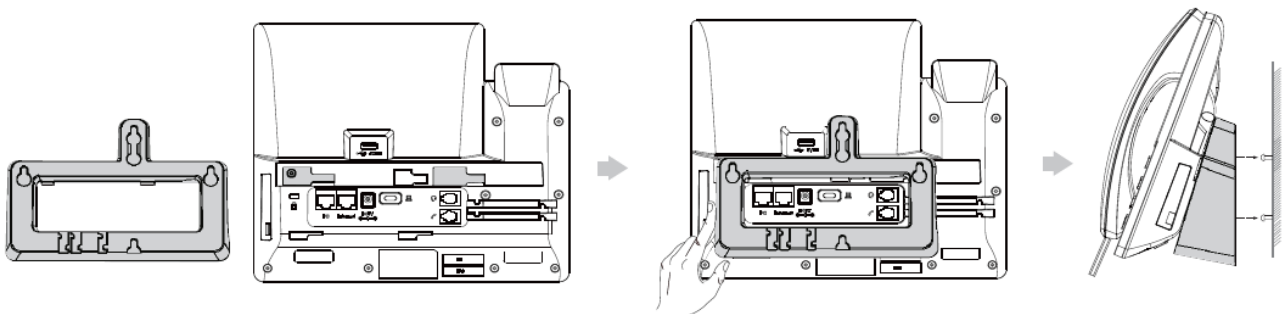
Note: We recommend that you use the accessories provided or approved by Yealink. The unapproved third-party accessories may result in reduced performance.

## Assembling Your Phone

1. Attach the stand:

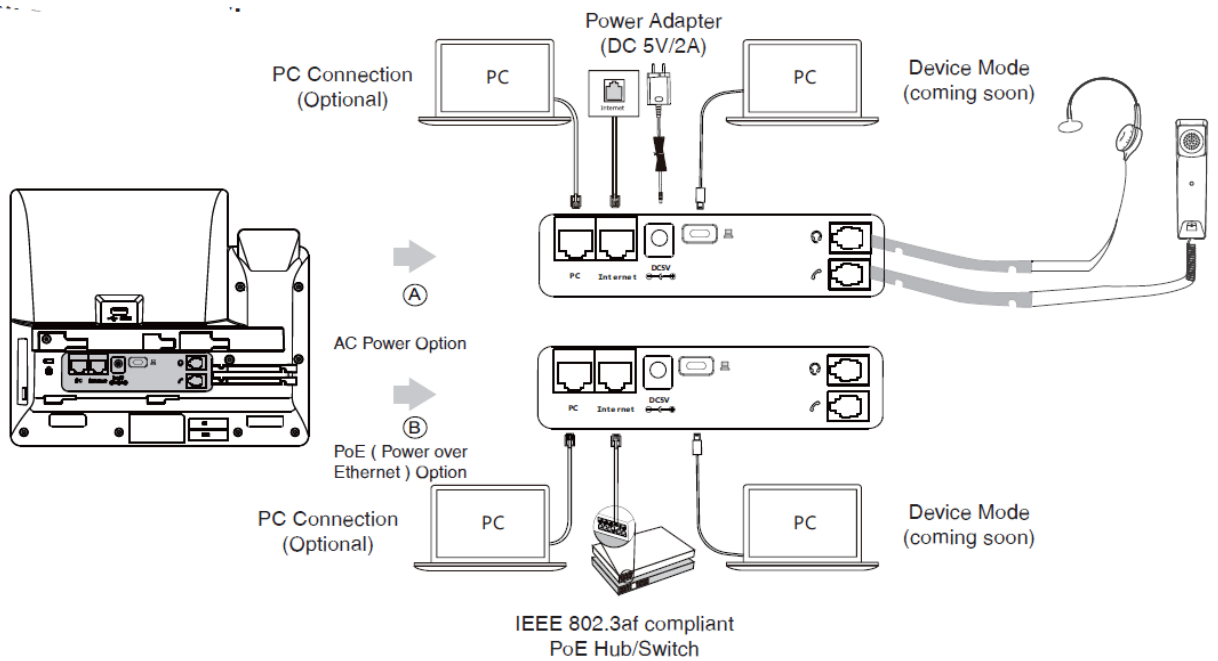


2. Optional: Attach the wall mount bracket:



Note: The reversible tab has a lip which allows the handset to stay on-hook when the IP phone is mounted vertically. For more information, refer to Yealink Wall Mount Quick Installation Guide for Yealink IP Phones.

3. Connect cables:

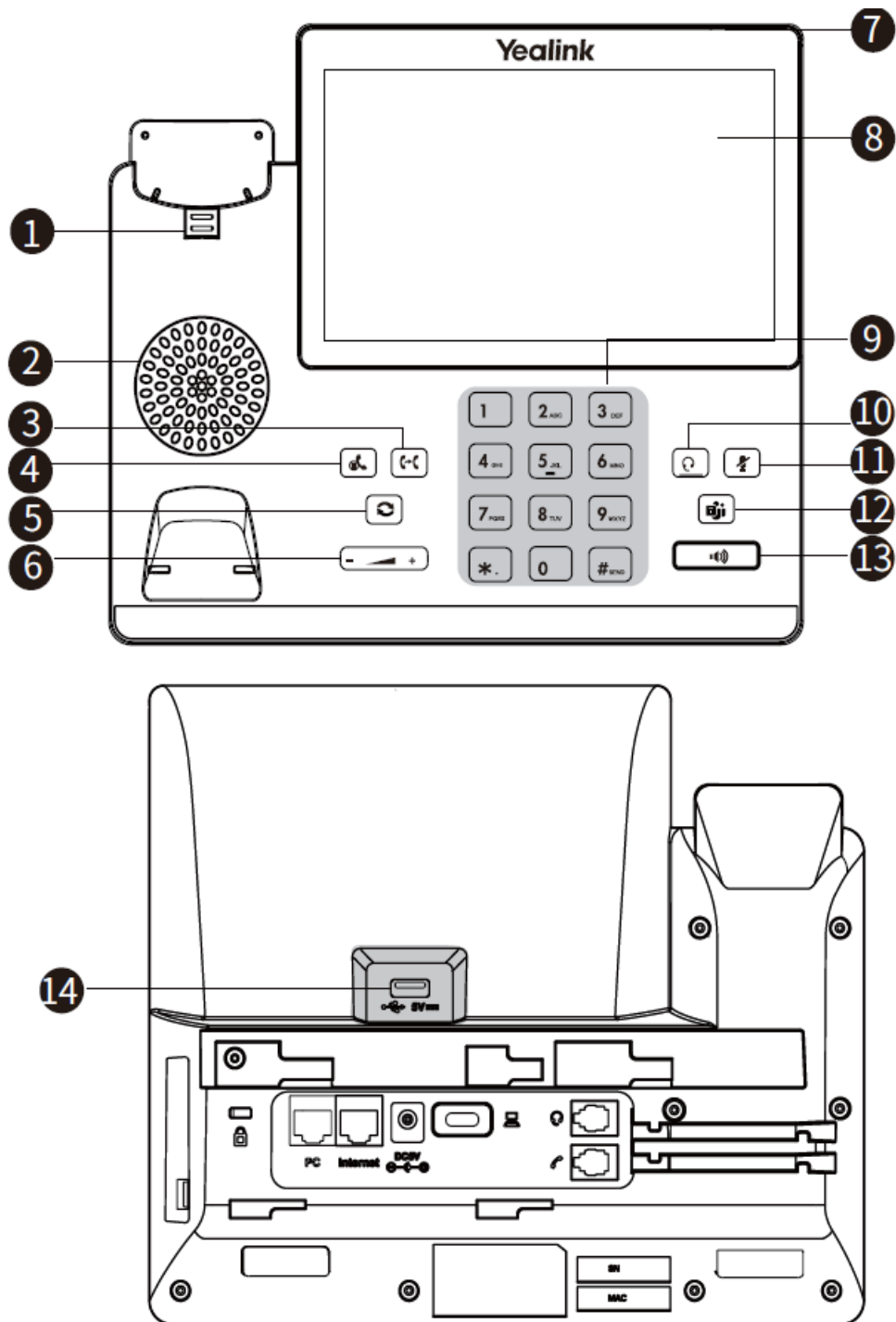


## Hardware Component Instructions

### Item

1. Reversible Tab
2. Speaker
3. Transfer Key
4. Hold Key
5. Redial Key
6. Volume Key
7. Power LED Indicator
8. Touch Screen
9. Keypad
10. Headset Key
11. Mute Key
12. Teams Key
13. Speakerphone Key

USB 2.0 Type-A port (DC 5 V/0.5 A)



## Declaration of Conformity

- YEALINK(XIAMEN) NETWORK TECHNOLOGY CO.,LTD
- Address: No.666 Hu'an Rd- Huli District Xiamen City, Fujian, P.R. China
- Manufacturer: YEALINK(XIAMEN) NETWORK TECHNOLOGY CO.,LTD
- Address: No,666 Hu'an Rd. Huli District Xiamen City, Fujian, P.R- China
- DATE: 25 / March/2024
- declare that the product
- Type: Smart Business Phone
- Model: MP56 E2
- meets the essential requirements and other relevant provisions according to the following EC directive
- Directive: 2014/30/EU, 2014/35/EU,RED 2014/53/EU

## Conformity

- The product complies with the following standards:
- safety : EN
- EMC:: EN
- EN
- EN IEC 61000-3-2: 2019+A1:2021
- EN 61000-3-3: 2013+A1:2019
- Radio:ETS1 EN 301 489-1 V2.2.3,
- ETSI EN 301489-3 V2.1.1,
- ETSI EN 301489-17 V3.2.4,
- ETSI EN 300 328 V2.2.2;
- ETSI EN 301 893 V2.1.1
- ETSI EN 300 440 V2.2.1
- Health IEC 62311:2020;
- Harmonized: UN-EN62321
- Directive 2011/65/EU and (EU)2015/863 of the European Parliament and of the Council of 8 June 2011 and 4 June 2015 on the restriction of the use of certain hazardous substances in electrical and electronic equipment(RoHS 2.0)
- Directive 2012/19/EU of the European Parliament and of the Council of 4.July.2012 on Waste electrical and electronic equipment(WEEE)
- Regulation (EC) No. 1907/2006 of the European Parliament and of the Council of 18.December.2006 on Registration, Evaluation, Authorization, and Restriction of Chemicals (REACH)
- The declaration of conformity is issued under the sole responsibility of the manufacturer
- NAME: Huahu wang  
DATE:

## GNU General Public License

Our product contains some source code that may be used and modified by anyone and everyone under the GNU General Public License (GPL), provided they, in turn, make it available to everyone else with the same licensing agreement.

Please visit <https://www.yealink.com/website-service/download/offer-source-of-open-source-software.pdf> or scan the QR-code below for the original GPL license and the source code of components licensed under GPL and used in Yealink products.



## Regulatory Notices

### Operating Ambient Temperatures

- Operating temperature: +14 to 113°F (-10 to +45°C)
- Relative humidity: 5% to 90%, noncondensing
- Storage temperature: -30 to +70°C (-22 to +158°F)



## Warranty

Our product warranty is limited only to the unit itself, when used normally in accordance with the operating instructions and the system environment. We are not liable for damage or loss resulting from the use of this product, or for any claim from a third party. We are not liable for problems with Yealink device arising from the use of this product; we are not liable for financial damages, lost profits, claims from third parties, etc., arising from the use of this product.

## DC symbol

is the DC voltage symbol.

## Restriction of Hazardous Substances Directive (RoHS)

This device complies with the requirements of the EU RoHS Directive. Statements of compliance can be obtained by contacting [support@yealink.com](mailto:support@yealink.com)

## Safety Instructions

Save these instructions. Read these safety instructions before use!

The following basic safety precautions should always be followed to reduce risk of fire, electrical shock, and other personal injury.

## General Requirements

- Before you install and use the device, read the safety instructions carefully and observe the situation during operation.
- During the process of storage, transportation, and operation, please always keep the device dry and clean.
- During the process of storage, transportation, and operation, please avoid collision and crash of the device.
- Please attempt not to dismantle the device by yourself. In case of any discrepancy, please contact the appointed maintenance center for repair.
- Without prior written consent, no organization or individual is permitted to make any change to the structure or the safety design of the device. Yealink is under no circumstance liable to consequences or legal issues caused by such changes.
- Please refer to the relevant laws and statutes while using the device. Legal rights of others should be respected as well.

## Environmental Requirements

- Place the device at a well-ventilated place. Do not expose the device under direct sunlight.
- Keep the device dry and free of dusts.
- Place the device on a stable and level platform.
- Please place no heavy objects on the device in case of damage and deformation caused by the heavy load.
- Keep at least 10 cm between the device and the closest object for heat dissipation.
- Do not place the device on or near any inflammable or fire-vulnerable object, such as rubber-made materials.
- Keep the device away from any heat source or bare fire, such as a candle or an electric heater.
- Keep the device away from any household appliance with strong magnetic field or electromagnetic field, such as a microwave oven or a refrigerator. Operating Requirements
- Do not let a child operate the device without guidance.
- Do not let a child play with the device or any accessory in case of accidental swallowing.

- Please use the accessories provided or authorized by the manufacturer only.
- The power supply of the device shall meet the requirements of the input voltage of the device. Please use the provided surge protection power socket only.
- Before plugging or unplugging any cable, make sure that your hands are completely dry.
- Do not spill liquid of any kind on the product or use the equipment near water, for example, near a bathtub, washbowl, kitchen sink, wet basement or near a swimming pool.
- Do not tread on, pull, or over-bend any cable in case of malfunction of the device.
- During a thunderstorm, stop using the device and disconnect it from the power supply. Unplug the power plug and the Asymmetric Digital Subscriber Line (ADSL) twisted pair (the radio frequency cable) to avoid lightning strike.
- If the device is left unused for a rather long time, disconnect it from the power supply and unplug the power plug.
- When there is smoke emitted from the device, or some abnormal noise or smell, disconnect the device from the power supply, and unplug the power plug immediately. Contact the specified maintenance center for repair.
- Do not insert any object into equipment slots that is not part of the product or auxiliary product.
- Before connecting a cable, connect the grounding cable of the device first. Do not disconnect the grounding cable until you disconnect all other cables. Cleaning Requirements
- Before cleaning the device, stop using it and disconnect it from the power supply.
- Use a piece of soft, dry and anti-static cloth to clean the device.
- Keep the power plug clean and dry. Using a dirty or wet power plug may lead to electric shock or other perils.



## ENVIRONMENTAL RECYCLING

Never dispose of the device with domestic waste. Ask your Town Council about how to dispose of it in an environmentally friendly way. The cardboard box, plastic packaging and player components may be recycled in accordance with prevailing recycling regulations in your country.

### **Always adhere to prevailing regulations**

Those who fail to do so may be fined or prosecuted in accordance with the law. The crossed out garbage can that appears on the device means that when it has reached the end of its useful life, it should be taken to a special waste disposal centre and treated separately to general urban waste.

## **Troubleshooting**

The unit cannot supply power to Yealink device. There is a bad connection with the plug.

1. Clean the plug with a dry cloth.
2. Connect it to another wall outlet.

The usage environment is out of operating temperature range.

1. Use in the operating temperature range.

The cable between the unit and the Yealink device is connected incorrectly.

1. Connect the cable correctly.

You cannot connect the cable properly.

1. You may have connected a wrong Yealink device.
2. Use the correct power supply.

Some dust, etc., may be in the port.

1. Clean the port.

Contact your dealer or authorized service facility for any further questions.

### Contact Information

YEALINK NETWORK TECHNOLOGY CO.,LTD.

No.666 Hu'an Rd,Huli District Xiamen City, Fujian, P.R.C


### YEALINK (EUROPE) NETWORK TECHNOLOGY B.V.

Sir Winston ChurchillIn 299 k, 2288DC Rijswijk

YEALINK (USA) NETWORK TECHNOLOGY CO., LTD.

999 Peachtree Street Suite 2300, Fulton, Atlanta, GA, 30309, USA Made in China

### Documents / Resources

 <p>Yealink Smart Business Phone MP56 E2 MP56 E2 Digit 1   80072   04661   776661   04661   776661 Quick Start Guide (171.6)</p>	<p><a href="#">Yealink MP56 E2 Smart Business Phone [pdf] User Guide</a> MP56 E2, MP56 E2 Smart Business Phone, Smart Business Phone, Business Phone, Phone</p>
---	---

### References

- [User Manual](#)

### Manuals+ [Privacy Policy](#)

This website is an independent publication and is neither affiliated with nor endorsed by any of the trademark owners. The "Bluetooth®" word mark and logos are registered trademarks owned by Bluetooth SIG, Inc. The "Wi-Fi®" word mark and logos are registered trademarks owned by the Wi-Fi Alliance. Any use of these marks on this website does not imply any affiliation with or endorsement.