



NanoSwitch™

Outdoor 4-Port PoE Passthrough Switch

Model: N-SW

(1) Gigabit 24V Passive PoE In Port

(3) Gigabit 24V Passive PoE Out Ports

Outdoor, Weather-Resistant Enclosure

NanoSwitch™

Overview

Introducing the Ubiquiti Networks® NanoSwitch™, an unmanaged switch with four Gigabit Ethernet ports. For its total non-blocking line rate, the NanoSwitch supports up to 4 Gbps.

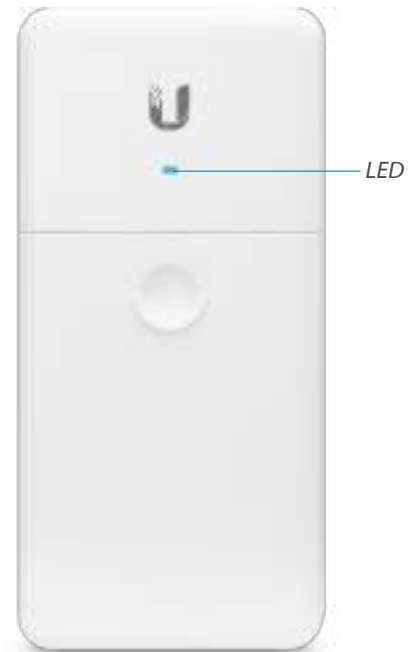
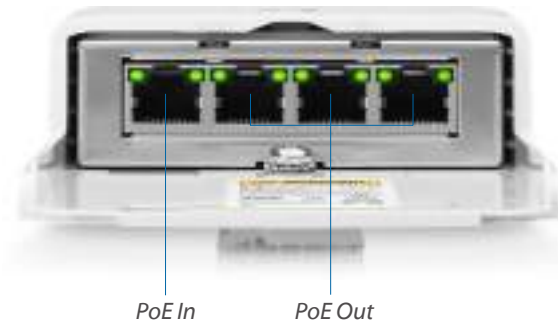
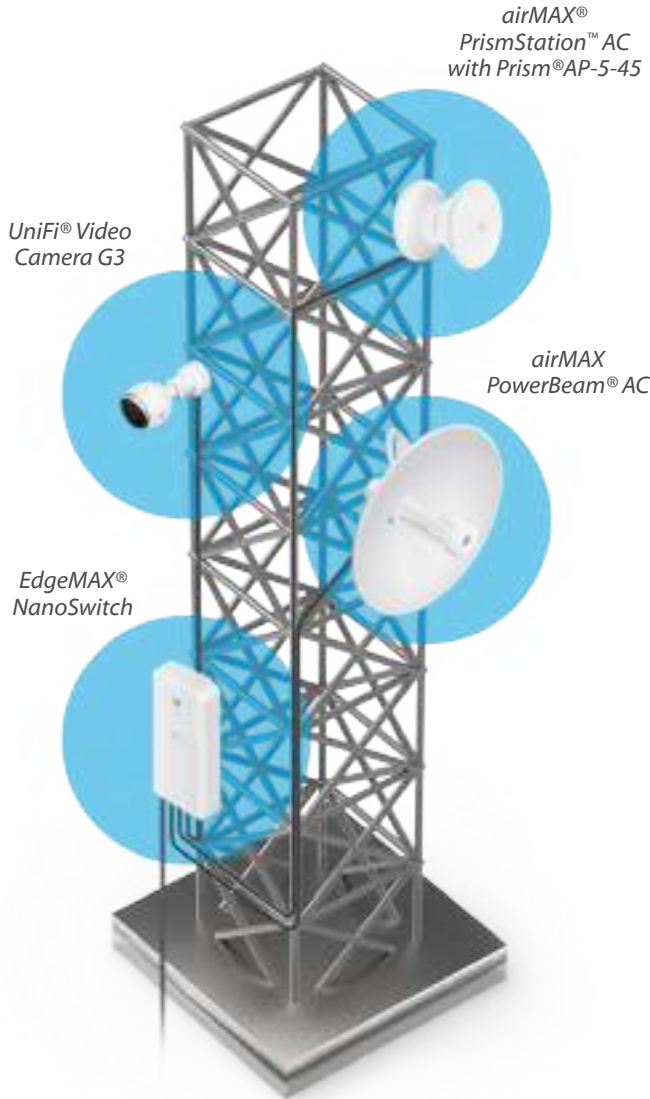
Hardware Features

Featuring a durable, weatherproof form factor, the NanoSwitch is ideal for outdoor deployment. For quick installation, the compact NanoSwitch can be easily mounted on a pole or wall.

Power over Ethernet

The NanoSwitch has four PoE ports:

Ports	Passive PoE
(1) PoE In	24V, 2-Pair
(3) PoE Passthrough	24V, 2-Pair



Specifications

N-SW	
Dimensions	196.4 x 93.5 x 32.4 mm (7.73 x 3.68 x 1.28")
Weight	271 g (9.6 oz)
Enclosure Characteristics	White Polycarbonate
Total Non-Blocking Line Rate	4 Gbps
Typical Power Consumption	1.5W
Max. Power Consumption	30W
Power Method	Passive 24V, 2-Pair PoE In
Power Supply	POE-24-30W-G-W PoE Adapter (Not Included)
LEDs	Speed/Link/Activity (All Ports)
Networking Interfaces	(4) 10/100/1000 Mbps RJ45 Ports
PoE Interfaces	Passive 24V, 2-Pair PoE In
Total Passive PoE Max. Wattage	24V, 2-Pair, 1A for 3 Ports (30W)
Passive PoE Max. Wattage per Port	24V, 2-Pair, 1A per Port (24W)
Passive PoE Voltage Range	21.6 - 30V
ESD/EMP Protection	Air: ± 24 kV, Contact: ± 24 kV
Shock and Vibration	ETSI300-019-1.4 Standard
Operating Temperature	-30 to 70° C (-22 to 158° F)
Operating Humidity	5 to 95% Noncondensing
Certifications	CE, FCC, IC



Specifications are subject to change. Ubiquiti products are sold with a limited warranty described at: www.ubnt.com/support/warranty
 The limited warranty requires the use of arbitration to resolve disputes on an individual basis, and, where applicable, specify arbitration instead of jury trials or class actions.
 ©2017-2019 Ubiquiti Networks, Inc. All rights reserved. Ubiquiti, Ubiquiti Networks, the Ubiquiti U logo, the Ubiquiti beam logo, airMAX, airOS, EdgeMAX, NanoSwitch, PowerBeam, Prism, PrismStation, and UniFi are trademarks or registered trademarks of Ubiquiti Networks, Inc. in the United States and in other countries. All other trademarks are the property of their respective owners.

