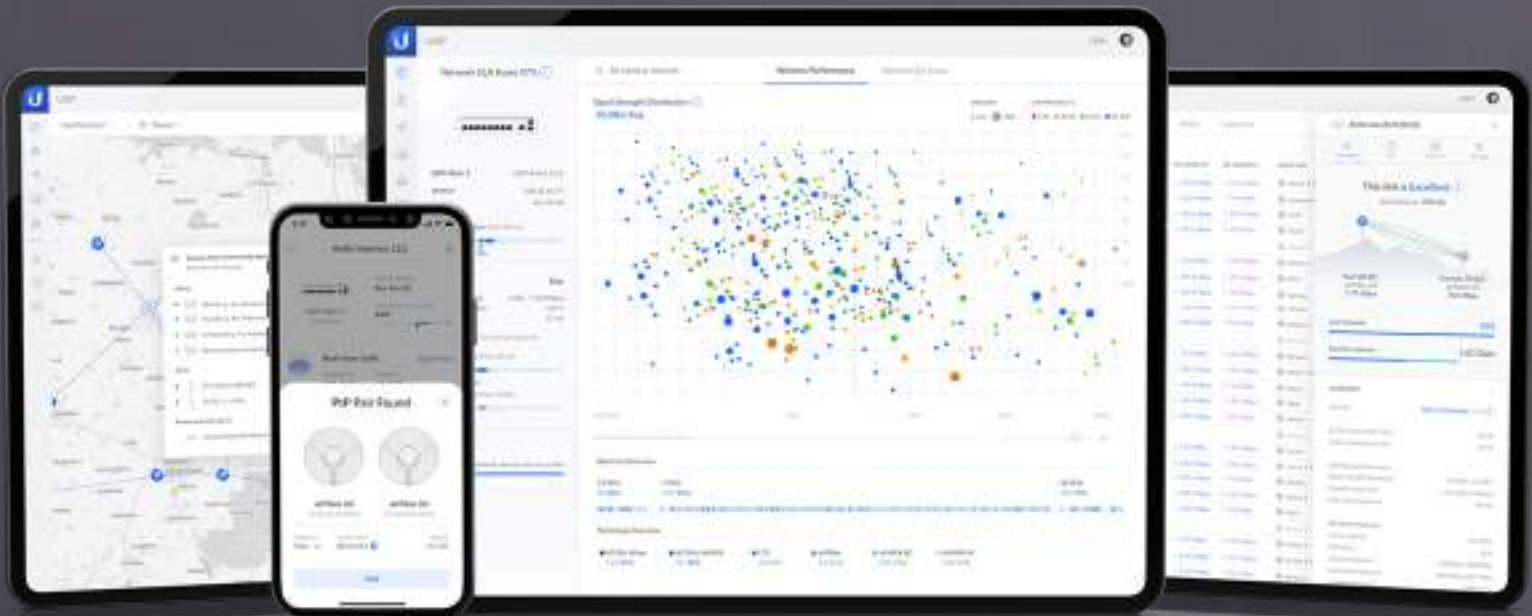


UISP



airFiber 60 HD

Multi-gigabit, 60 GHz bridge with SFP+ support and a 2 km link range.

The airFiber 60 HD (AF60 HD) is a 60 GHz radio designed to create superior mid-range, point-to-point (PtP) links up to 2 km. The AF60 HD delivers low-interference, low-latency throughput within the 60 GHz spectrum. Compact and highly durable, the AF60 HD also features integrated GPS and a Bluetooth management radio to simplify setup, configuration, and monitoring. This bridge is ideal for ISPs looking to maximize signal linking with cost-effective equipment.



Mechanical

| | |
|---------------------|--|
| Dimensions | Ø189 x 89 mm (Ø7.4 x 3.5") |
| Weight | Without mount: 1.8 kg (3.9 lb) With mount: 2.95 kg (6.5 lb) |
| Enclosure materials | Aluminum alloy, UV stabilized plastic |
| Mount material | Stainless steel (SUS304) |
| Mount | 60G precision alignment pole mount (included) |
| Wind loading | 64 N at 200 km/h (14.39 lbf at 125 mph) |
| Weatherproofing | IPX6 |

Hardware

| | |
|-------------------------|---|
| Processor | Quad-Core ARM® Cortex® A72 at 1.6 GHz |
| Memory | 2 GB DDR4 |
| Networking interfaces | (1) GbE RJ45 port (1) 1/10G SFP+ port |
| Button | Factory reset |
| RF connections | Internal |
| Max. power consumption | 29.31W |
| Power method | Passive PoE 4-pairs (1, 2+; 3, 6-) (4, 5+; 7, 8-) or 2-Pairs (4, 5+; 7, 8-) |
| Power supply | 48VDC, 0.65A gigabit PoE adapter (included) |
| Supported voltage range | 48VDC ± 10% |
| Operating temperature | -40 to 55° C (-40 to 131° F) |
| Operating humidity | 5 to 95% noncondensing |
| Certifications | FCC, IC, CE, terragraph |

LEDs

| | |
|----------|---|
| Power | Flashing white: bootup in progress White: not connected to UISP console Blue: connected to UISP console |
| Ethernet | Flashing blue: ethernet activity |
| GPS | Blue: receiving at least (4) GPS satellite signals |
| 60G | Blue: active connection |

System

| | |
|-----------------------|--|
| Maximum throughput | 60 GHz: 3.8 Gbps/6 Gbps (with channel bonding enabled) |
| Maximum range | 2 km |
| Encryption | WPA2-PSK (AES) |
| Uplink/Downlink ratio | 50/50 |

Software

| | |
|-------------------------------|--|
| OS | airFiber® |
| Modes | PtP only |
| Services | UIISP, ping watchdog, web server, SSH server, NTP client, system log, device discovery |
| Utilities | Beamform info, discovery utility, ping, trace route, speed test |
| Network | Bridge mode |
| Wireless settings | GPS sync* <small>*GPS is used to populate UI/UX elements.</small> |
| Management interface | Bluetooth management for easy setup over UIISP app WEB UI |
| Minimum software requirements | Any modern WEB browser/iOS or Android based smartphone |

RF

| | |
|----------------------|---|
| Operating frequency* | 57 to 66 GHz <small>*Depends on regulatory region.</small> |
| GPS | Yes |
| Channel bandwidth | 2160 MHz/4320 MHz (with channel bonding enabled) |
| Operating channels | 58320, 59400, 60480, 61560, 62640, 63720, 64800 MHz* <small>*It depends on the channel bandwidth</small> |
| Beamwidth | HPOL: NaN (the antenna is only vertically polarized) VPOL: 3° Elevation: 3° |
| Electrical downtilt | 0° |



Specifications are subject to change. Ubiquiti products are sold with a limited warranty described at www.ui.com/support/warranty

©2021 Ubiquiti Inc. All rights reserved. Ubiquiti, Ubiquiti Networks, the Ubiquiti U logo, airFiber, airOS, and UIISP are trademarks or registered trademarks of Ubiquiti Inc. in the United States and in other countries. All other trademarks are the property of their respective owners.